

## **Game Management Unit 1A**

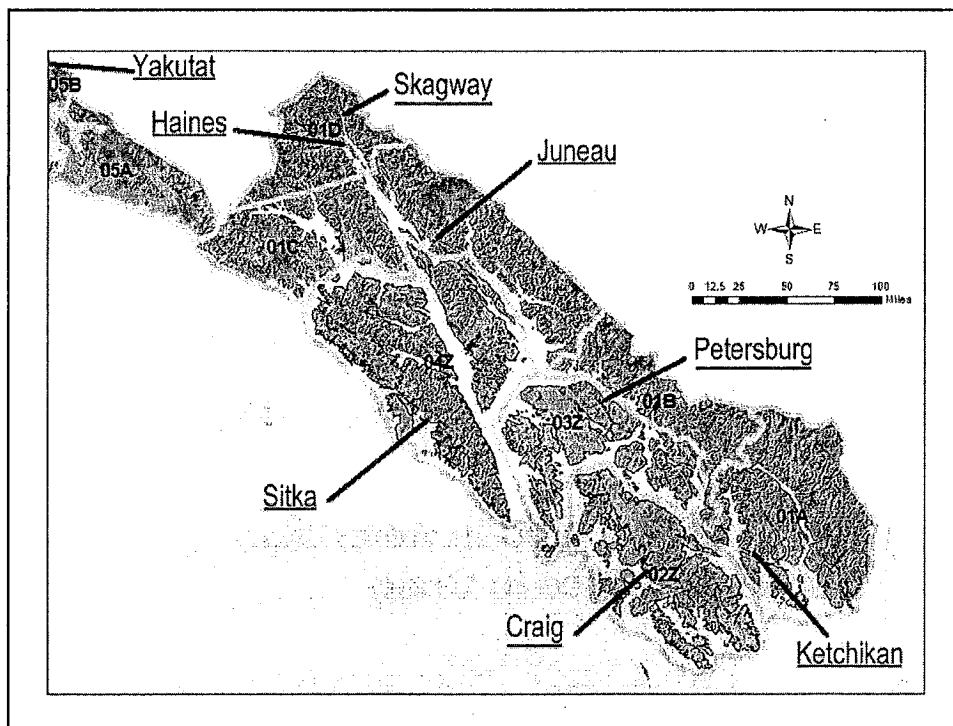
- **Important Game Species**
  - **Moose**
  - **Goats**
  - **Deer**
  - **Black Bear**
  - **Brown Bear**
  - **Furbearers**
  - **Waterfowl**

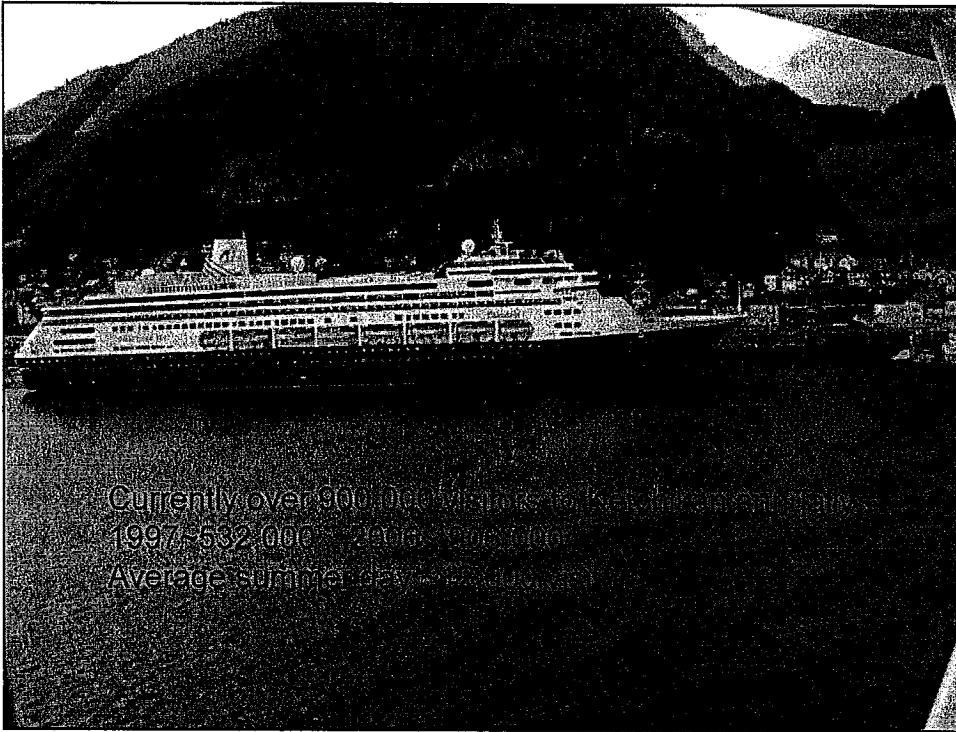
## **MAJOR COMMUNITIES**

- KETCHIKAN**      pop. ~ 2,500
  - Metlakatla**      pop. ~ 600
  - Others**      pop. ~ 450
- **Area Office located in Ketchikan**  
**Satellite office in Craig**

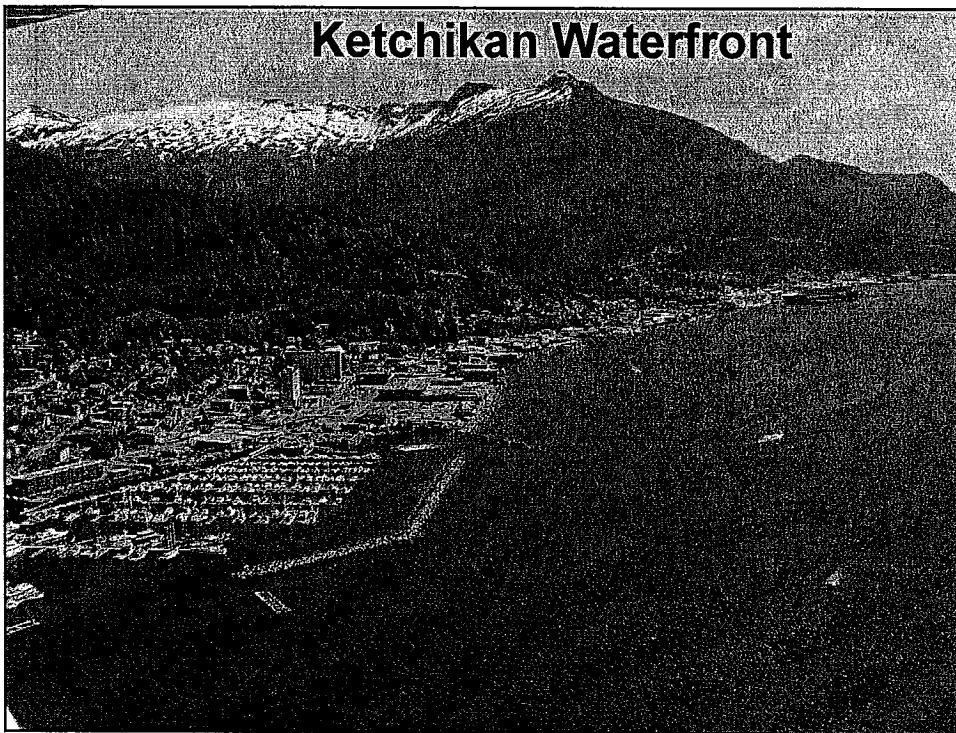
# Ketchikan Management Area

- Unit 1A Mainland and Islands
- ~ 5300 Square Miles
- Includes: 2400 Square Miles Misty Fiords National Monument
  
- Unit 2 Prince of Wales and other Islands
- ~ 3,600 Square Miles
- Includes: 3<sup>rd</sup> Largest Island in North America





Currently over 900,000 visitors to Ketchikan annually  
1997-532,000      2006-506,000  
Average summer day-5,000 people



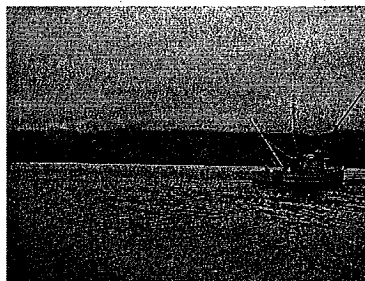
## Ketchikan Waterfront

## Logging

- Mental Health Sales
- University Sales
- Federal Sales
- State Sales
- Sealaska Outside Box Selection
- Sealaska Cleveland Harvest

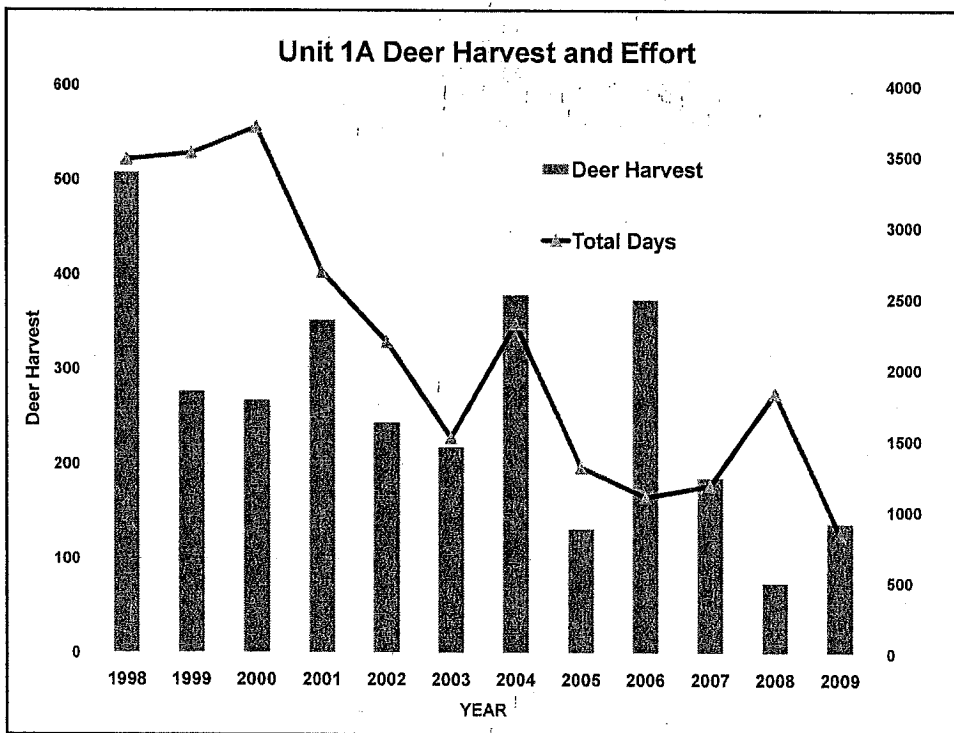
## Commercial Fishing

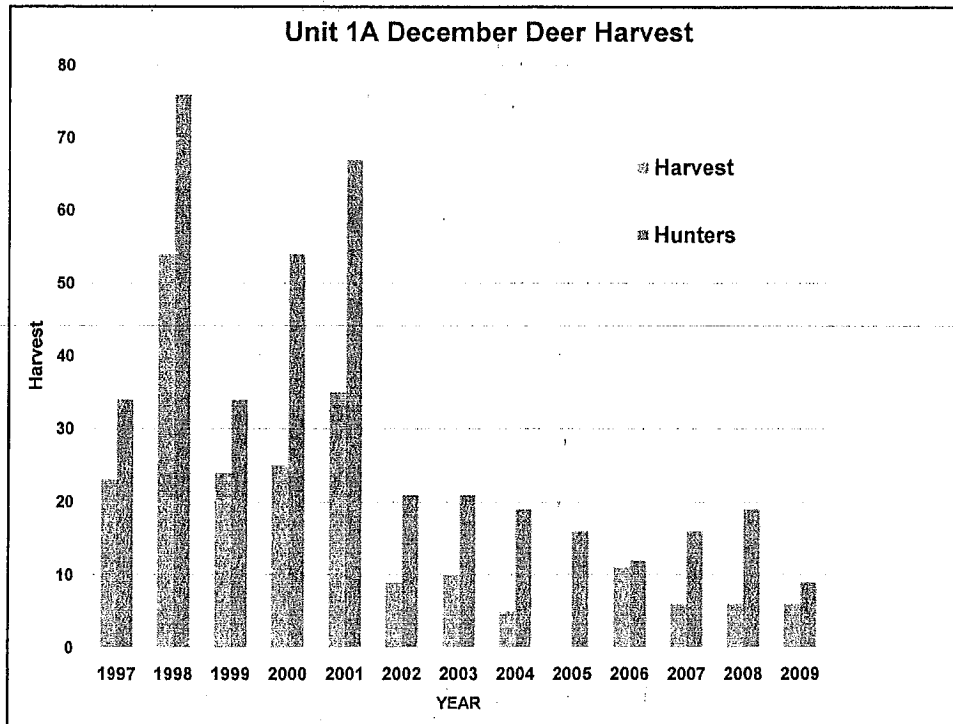
- Seine
- Gill Net
- Ground Fish
- Trolling
- Dive Fishery
- Shrimp/Crab



## Unit 1A Deer

- Population at Moderate to Low Level
- Winters Are Limiting
- Second Growth Issues
- Predation by Black Bears, Brown Bears, Wolves, and Mountain Lions



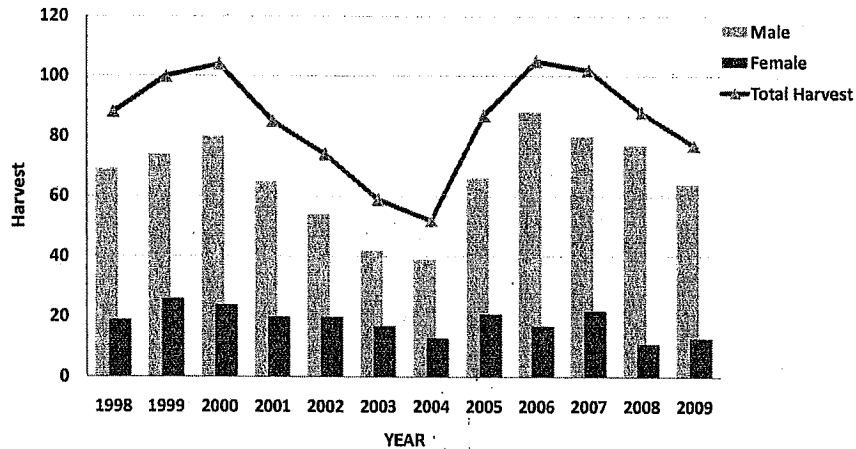


## Unit 1A Black Bears

- Wide Distribution
- Healthy Population
- Harvest Fluctuates
- Spring Hunting Along Extensive Shoreline
- Color Phase on Mainland Includes Blue, Cinnamon, and White

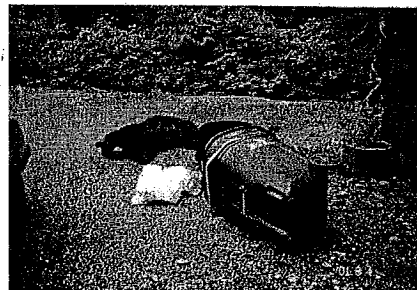


## Unit 1A Black Bear Harvest



## Nuisance Bears/People

- Some years in Ketchikan killed 6-15 bears
- Seldom move bears
- Education effort
- Shifting responsibility to local residents
- Still no Ketchikan Borough or City garbage ordinance





## Unit 1A Goat Status

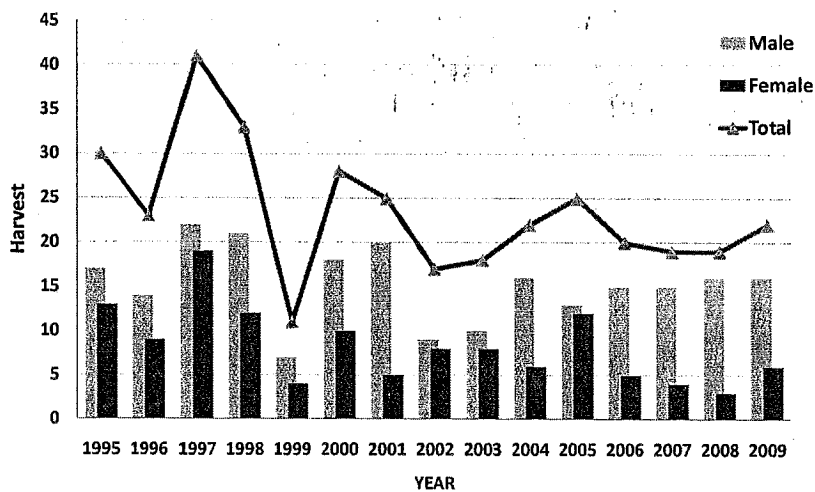
- Healthy goat population
- One of the highest goat densities in state
- Several goats each year make B&C
- Several trend count areas showing low counts
- Both Transplants Showing Rapid Horn Growth Patterns
- Both Transplant Populations Have Stabilized
- Deer Mountain Area Open By Drawing Permits

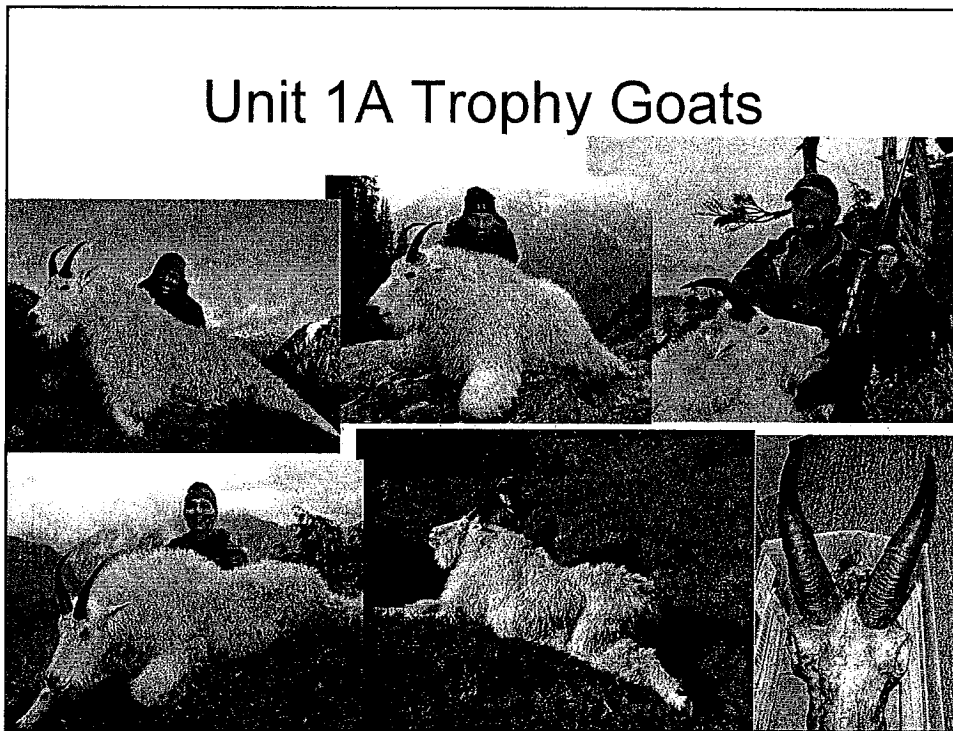
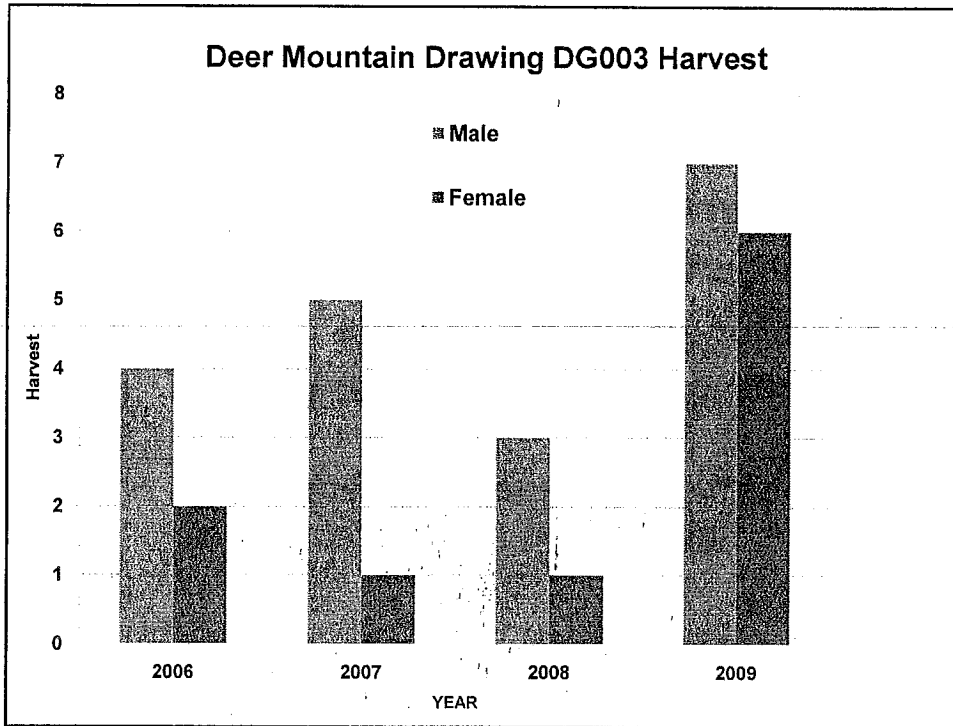


## Our Goat Management Approach

- Registration permits
- Hunter Comments
- Aerial Composition Surveys
  - Manage for 2-6 points/hundred goats surveyed
  - 2 points if poor survey conditions, bad winter, high harvest, or other concerns

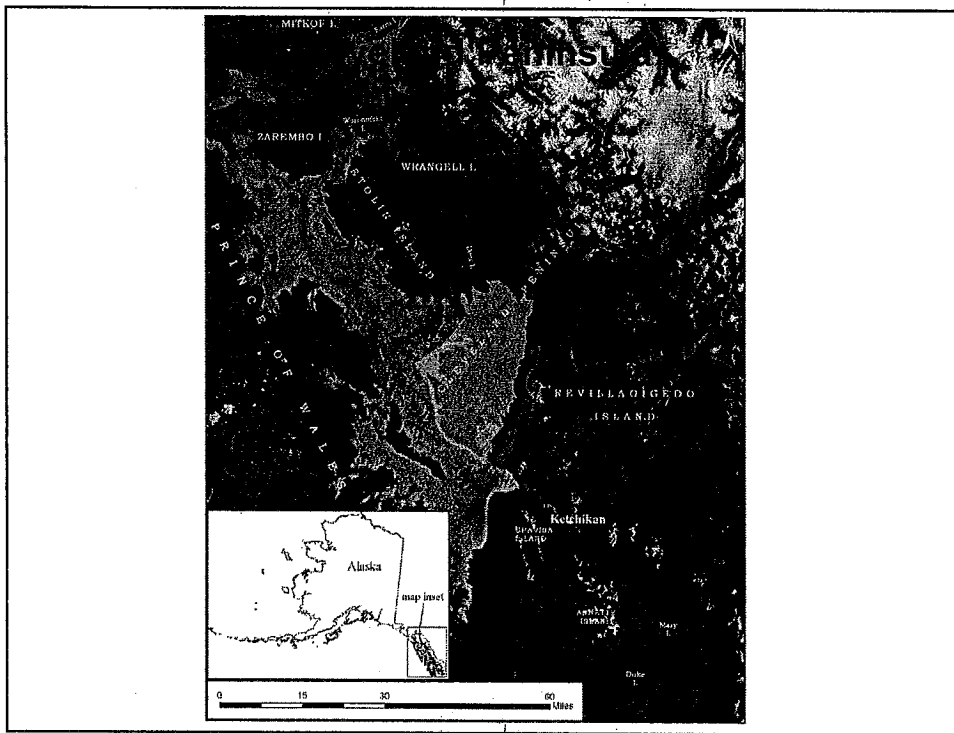
## Unit 1A Goat Harvest

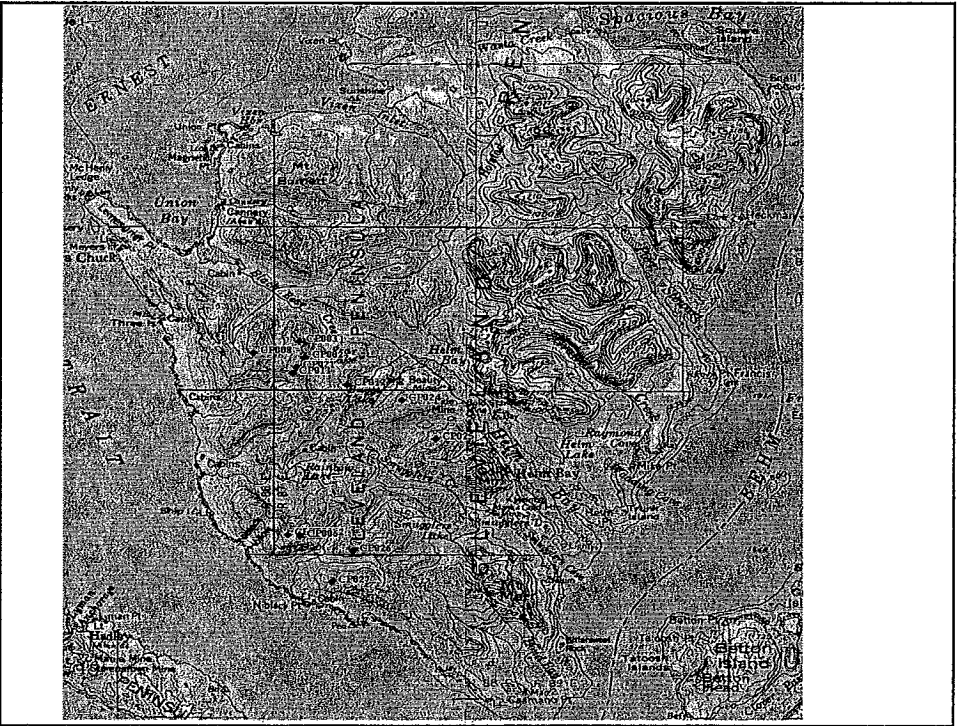
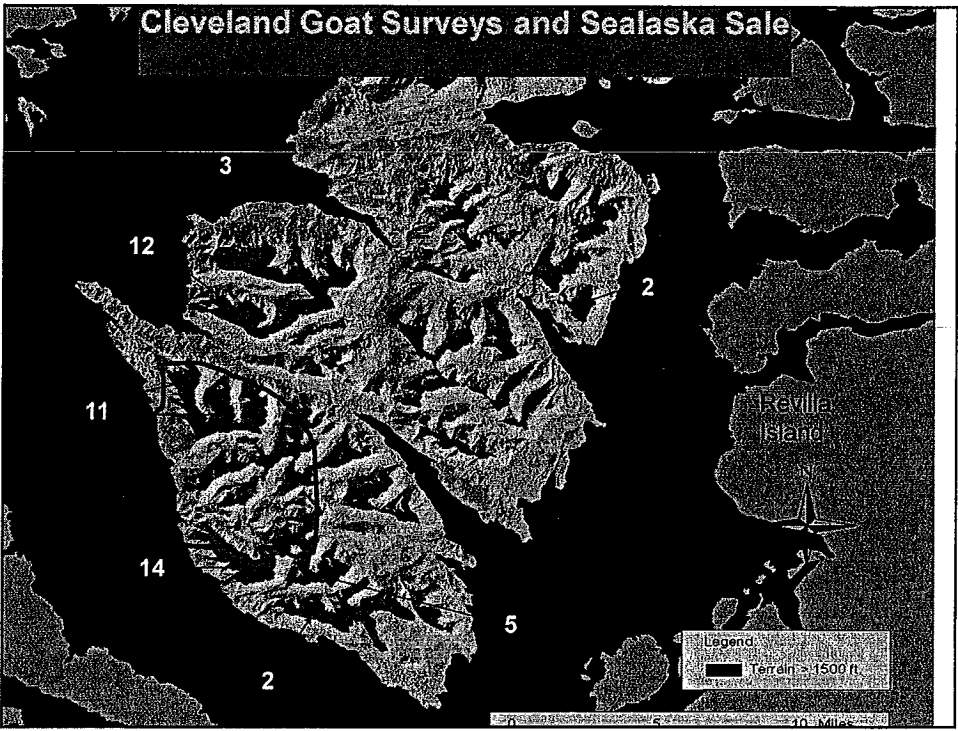




## Cleveland Goat Research (USFS and ADFG)

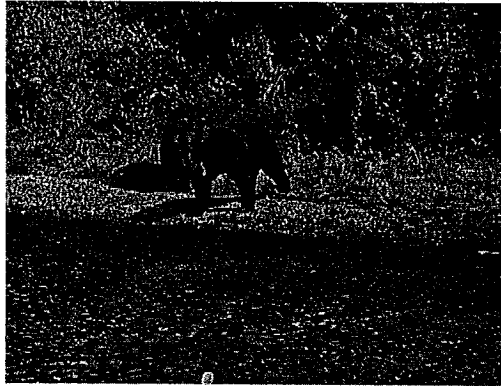
- 2009 Captured 8 Goats
- 7 VHF Collars
- 
- 2010 Captured 5 Goats
- 5 GPS Collars
- Sightability Index, Mortality, Movements, Habitat Use, DNA For Viability



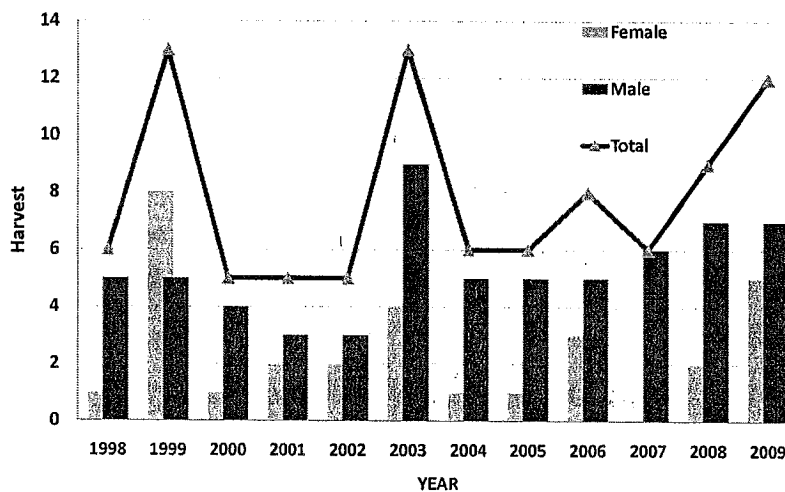


## Unit 1A Brown Bear

- Distribution on Mainland, Cleveland, and Revilla Island
- Estimated Population 150-300
- Distribution Expanding
- Harvest Stable
- Important for Viewing and Hunting



## Unit 1A Brown Bear Harvest



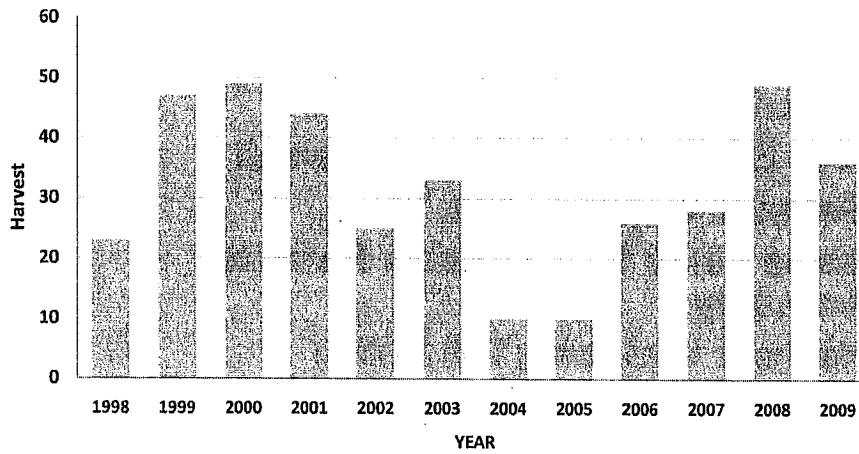
## **Mainland Brown Bear Research**

- **GPS Collars Providing Movement and Habitat Use**
- **Hair Snares For Mark Recapture Population Estimate**
- **Working with Canadian Bios Data Sharing**

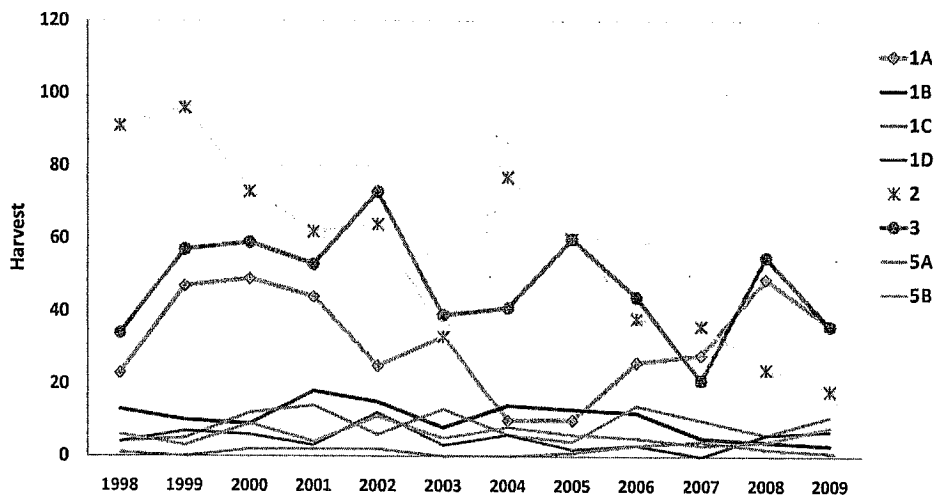
## **Unit 1A Wolves**

- **Wolf Population Appears Stable**
- **Trapping Effort Fluctuates**
- **Most Trapping Along Beaches**
- **Trophy Species for Nonresidents**
- **Hunting Season Extended to include August and April**
- **Trapping Season extended November and April**

# Unit 1A Wolf Harvest

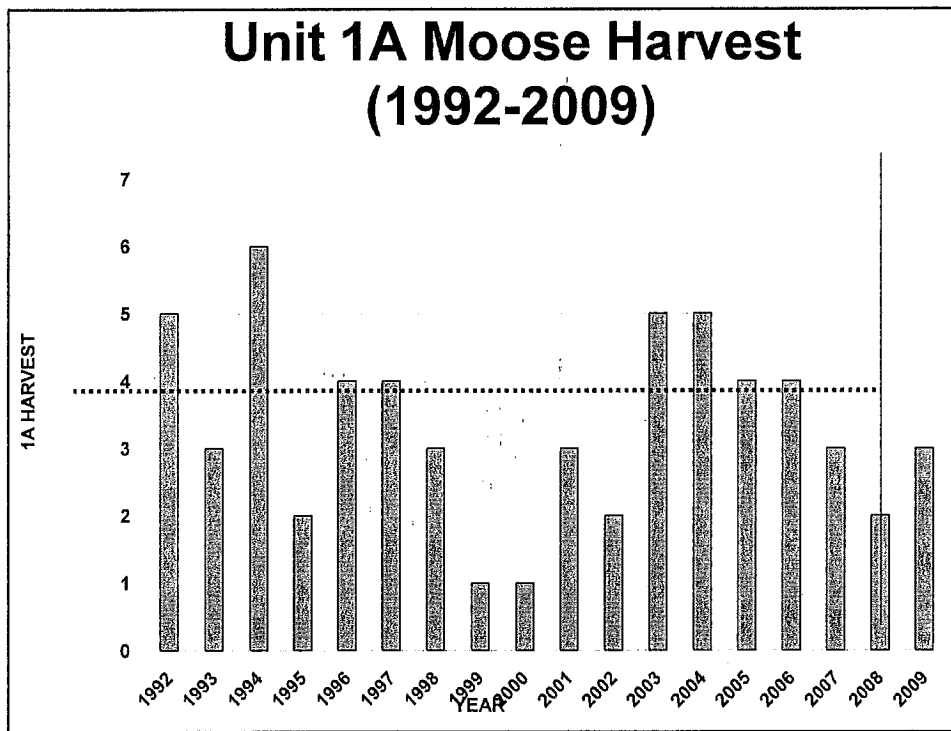


# Southeast Wolf Harvest



## Unit 1A Moose

- Concentrated Mostly along the Unuk River
- Population and Harvest Low
- Any Bull by Registration Permit
- Season: Sept.15–Oct. 15
- Issue 40-70 Registration Permits Annually
- Harvest Variable (1–6 bulls)
- Federal Registration Hunt Starts 10 Days Early (Sept. 6)
- Difficult to obtain Federal Hunt Data





## **Unit 1A Furbearers**

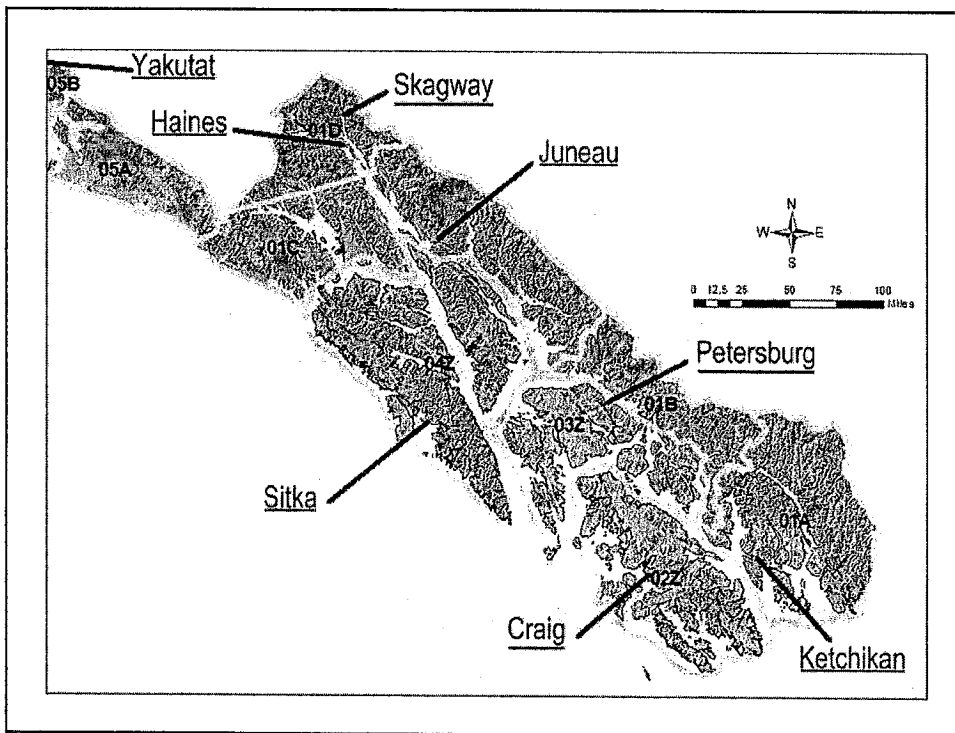
- **Marten average 167 (range 42-654)**
- **River Otter average 104 (range 45-185)**
- **Beaver average 35 (range 7-50)**
- **Wolverine average 3 (range 1-7)**



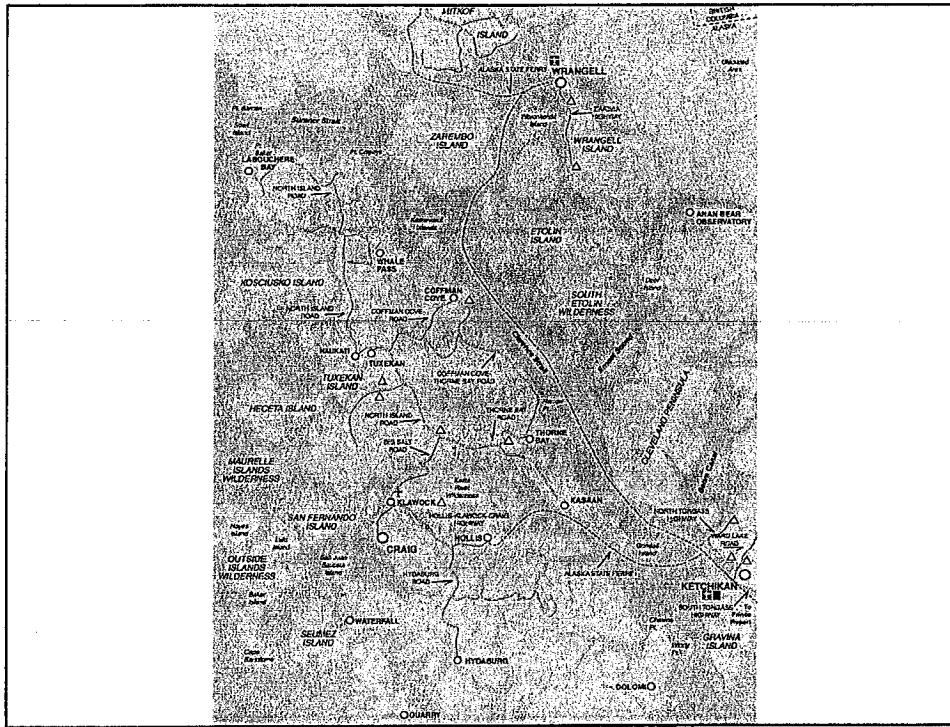
## Unit 2

### ▪ Important Species

- Deer
- Black Bear
- Wolves
- Furbearers
- Upland Birds



## Ketchikan Area Overview-Unit 2



### MAJOR COMMUNITIES

- Craig pop. ~ 1,500
- Klawock pop. ~ 650
- Thorne Bay pop. ~ 450
- Total POW pop. ~ 3,750

- ADFG office located in Craig

## Ketchikan Area Overview-Unit 2



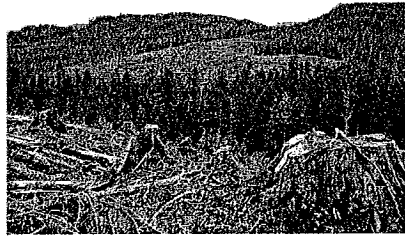
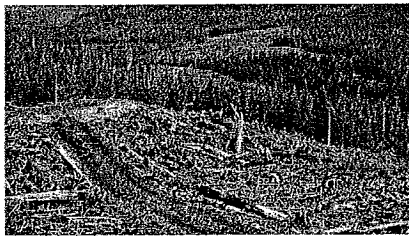
### Major Industry

- Timber
- Commercial fishing
- U.S. Forest Service
- Small Mills
- Tourism
  - Charter Fishing
  - Hunting & Fishing
  - Bear Viewing

## Logjam Timber Sale

- 73 MBF timber
- 3,422 acres
- 22 miles of new road
- Up to 50% allowed for export
- Diesel timber sale currently underway

## Diesel Sale



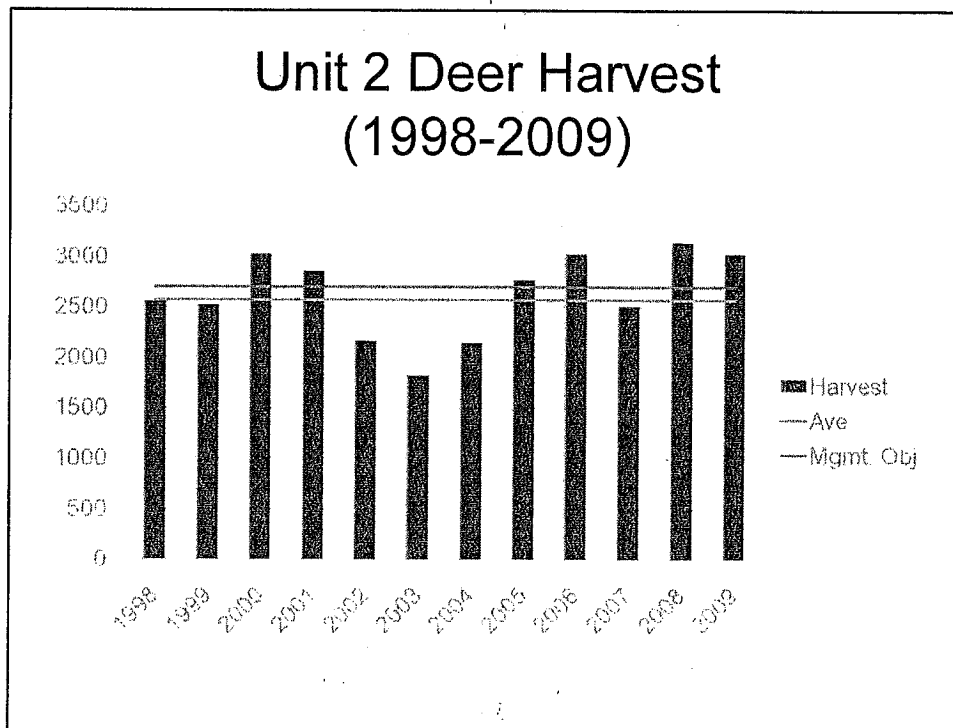
## Sealaska Bill

- Sealaska Corp. entitled to approx. 375K acres under 1971 ANCSA
- Transfer 85K acres of TNF to Seak Corp.
- Relinquish rights to 327K acres previously designated for selection
- Approximately 75K acres clear-cut logging
- Remainder in numerous sacred and "Native Futures" Sites

## Unit 2 Black-Tailed Deer

- Fed. subsistence season July 24 – Dec 31, Bag limit 5 including up to one doe (Oct 15-Dec 31)
- State season Aug 1 – Dec 31, bag limit 4 bucks
- Non-federally qualified hunters season is August 16-December 31 (on Federal lands in Unit 2)
- Healthy and abundant population
- Mild winter in 2009/10 & low predator #'s
- Large tracts of second growth reaching stem exclusion stage
- Proposal 24

# Ketchikan Area Overview-Unit 2





## Unit 2 Deer Research



## Deer Reproduction & Survival

- Objective:
  - measure neonate fawn survival
  - ID sources of fawn mortality
  - ID habitat and landscape correlates of mortality
  - Logged and unlogged watersheds
- Field Work:
  - Radio-collar does and fawns
  - Characterize birth & death sites, body condition mothers and fawns, monitor snowfall

## Deer Reproduction & Survival

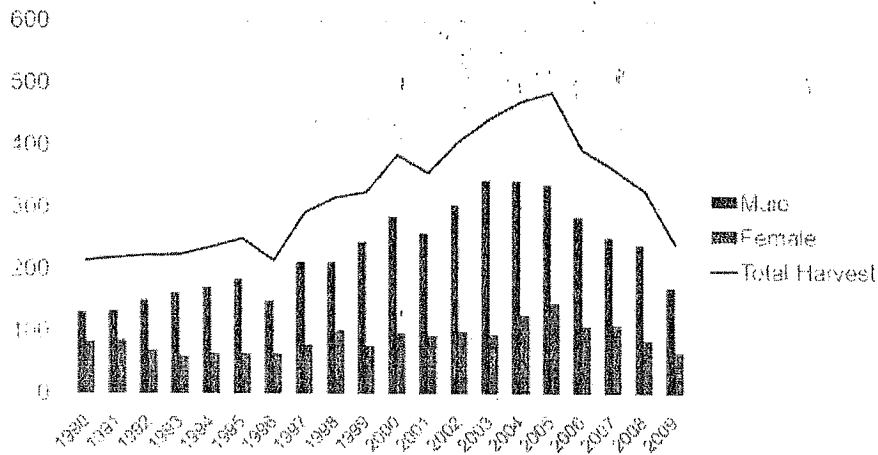
- **Results 2010:**
  - 21 does and 46 fawns collared
  - 19 (40%) fawn mortality (as of 9-10)
  - 15 black bear predation
  - 1 motor vehicle accident
  - 1 unknown predator
  - 1 poached (along with doe)
- **Project to continue for next three years**

## Unit 2 Bear Issues

- **Obvious changes in population over last decade**
- **No bear population or demographic data for Unit 2**
- **Recent harvest decline concerning**
- **Complaints from residents, guides, transporters, local hunters, lodges and other public about chronic low bear numbers and female harvest**
- **No measures of hunting success rates**
- **Increasing transporters**
- **Crowded hunting conditions**
- **Increasing conflicts between consumptive & non consumptive users**
- **Proposals 19-23, 33-40**

# Ketchikan Area Overview-Unit 2

## Unit 2 Black Bear Harvest (1990-2009)



## Dog Salmon Viewing Area



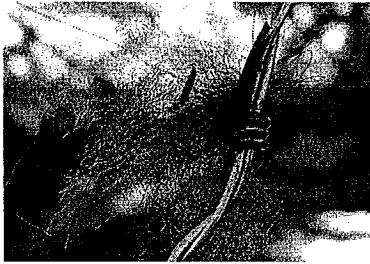
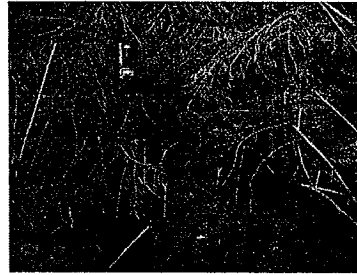
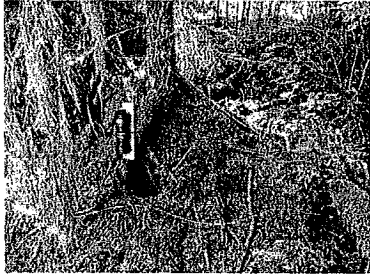
## Dog Salmon Viewing Area

- Approx. 1200 visitors in 6 week period
- 12 visitors every 2 hours
- No hunting within 150 yards by CFR
- USFS planning expanded parking & toilet facilities
- USFS wants to expand No Hunting Area as part of Dog Salmon Bear/Wildlife Viewing Area Management Plan

## Unit 2 Bear Research



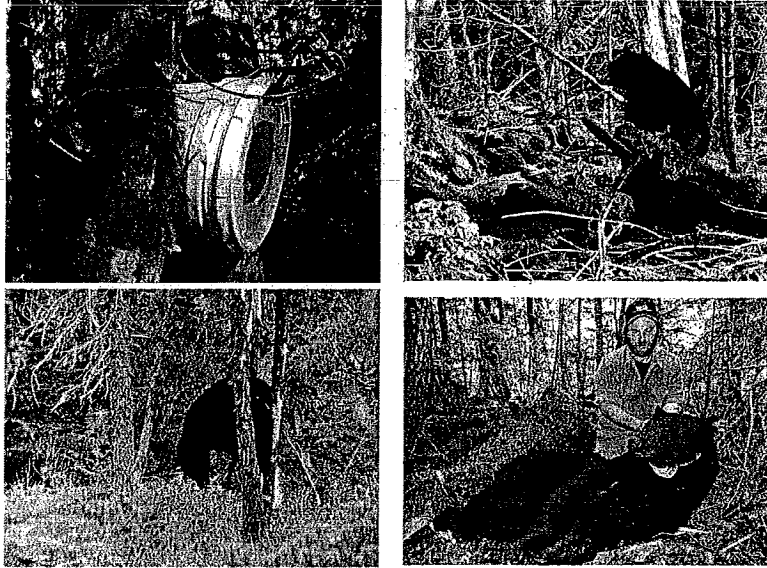
## Hair Snare DNA Mark-Recapture



## Hair Snare DNA Mark-Recapture

- Objectives:
  - Harvest Rate
  - Movements
  - Crude density estimate
  
- Currently awaiting lab results

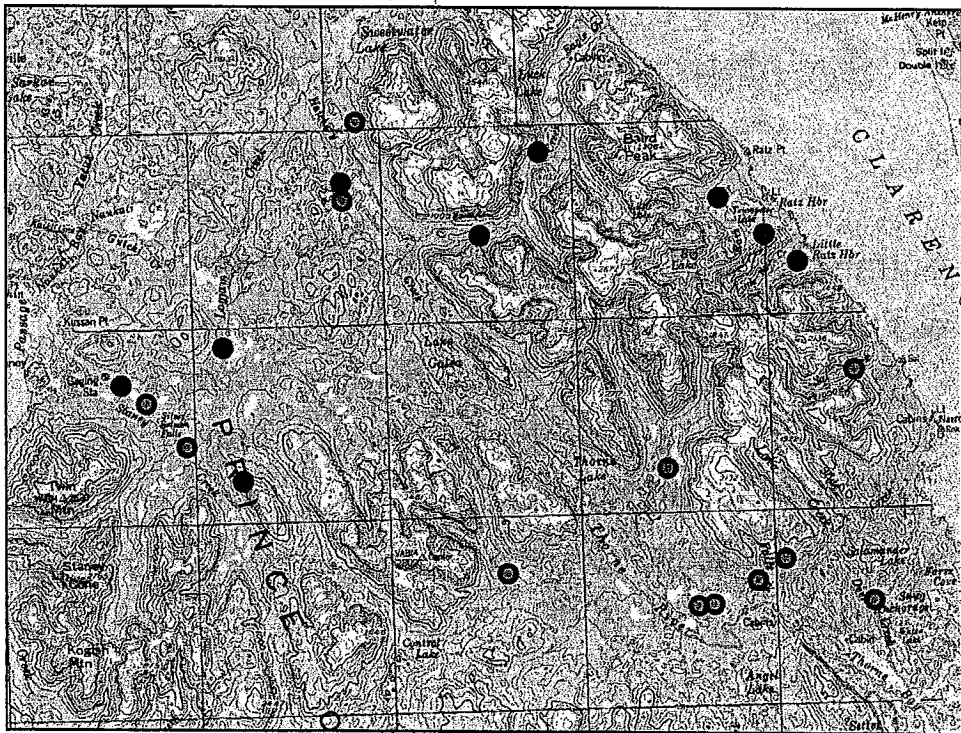
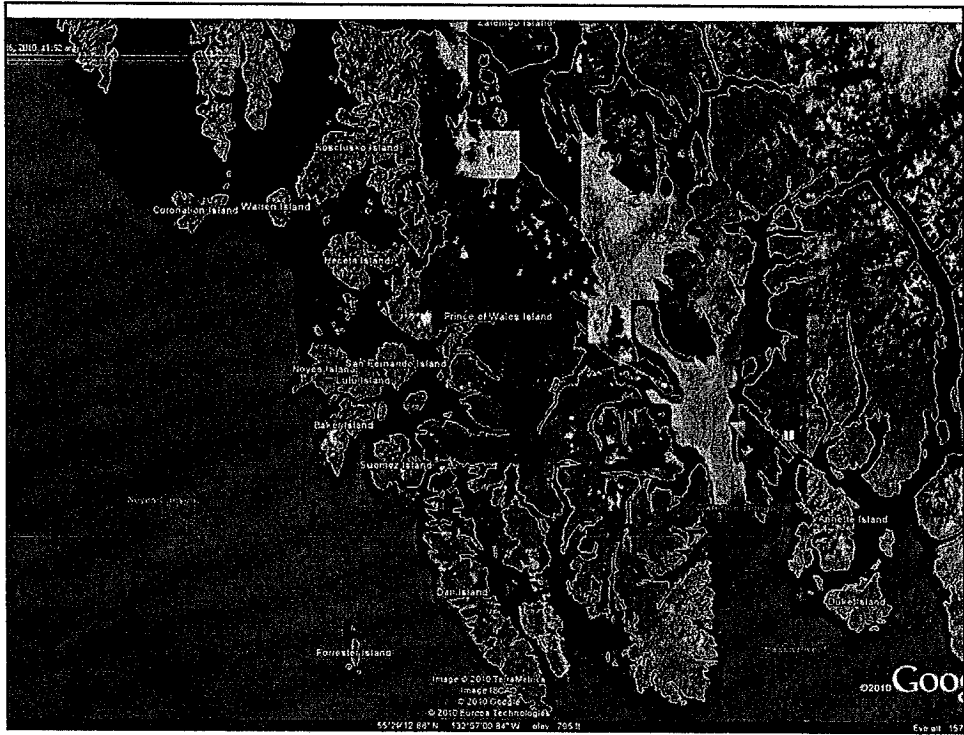
## Demographic, Life History, & Movement Research Project




## Demographic, Life History, & Movement Research Project

- Objectives:
  - Movement patterns
  - Vulnerability to harvest
  - Home range estimates (first ever in SE Alaska)
  - Den site descriptions and habitat selection
  - Fecundity and cub survival
  - Will help corroborate DNA work, deer study and previous black bear research in SE Alaska

# Ketchikan Area Overview-Unit 2



## Ketchikan Area Overview-Unit 2



The Far Side®  
• 2001 •  
FEBRUARY  
19  
Monday  
Presidents' Day

ADF&Gs painstaking field research to decode the movement of bears comes to a sudden and horrific end.

### Southern Southeast Islands Controlled Use Area

- Implemented at the 2008 BOG Meeting
- No motorized land vehicle use for bear hunting September 1-30 in Units 2 and 3
- Includes transport of hunters, hunting equipment and bears
- Mostly affects non-residents
- Sunset clause 2012



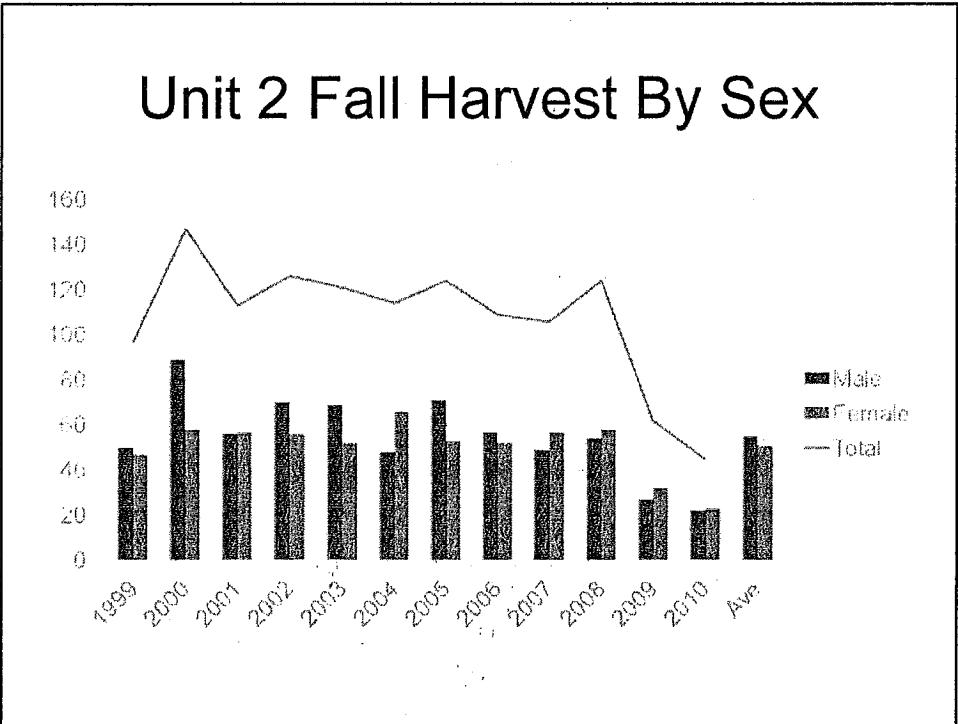
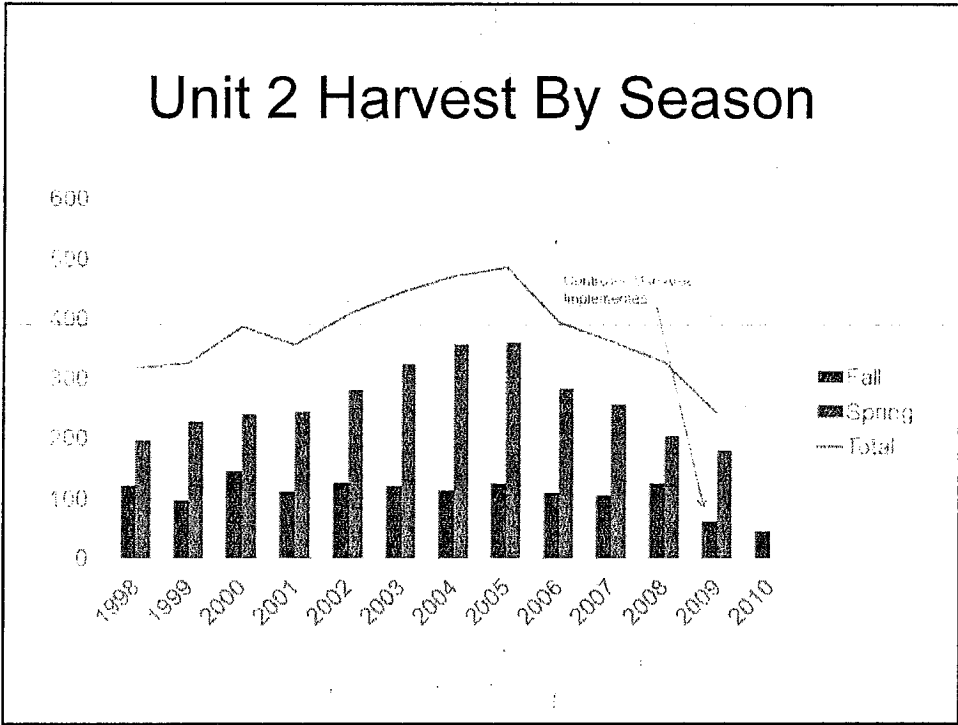
## 2008 BOG Alternatives

- Fall drawing Hunt For Nonresidents
- Close Nonresident Fall Season Odd Years
- Close NR Fall Bear Hunting Season
- Open Black Bear Season Sept. 15
- Make No Changes
- Collect More Information and Monitor For 2 More Years
- Controlled Use Area For Central POW

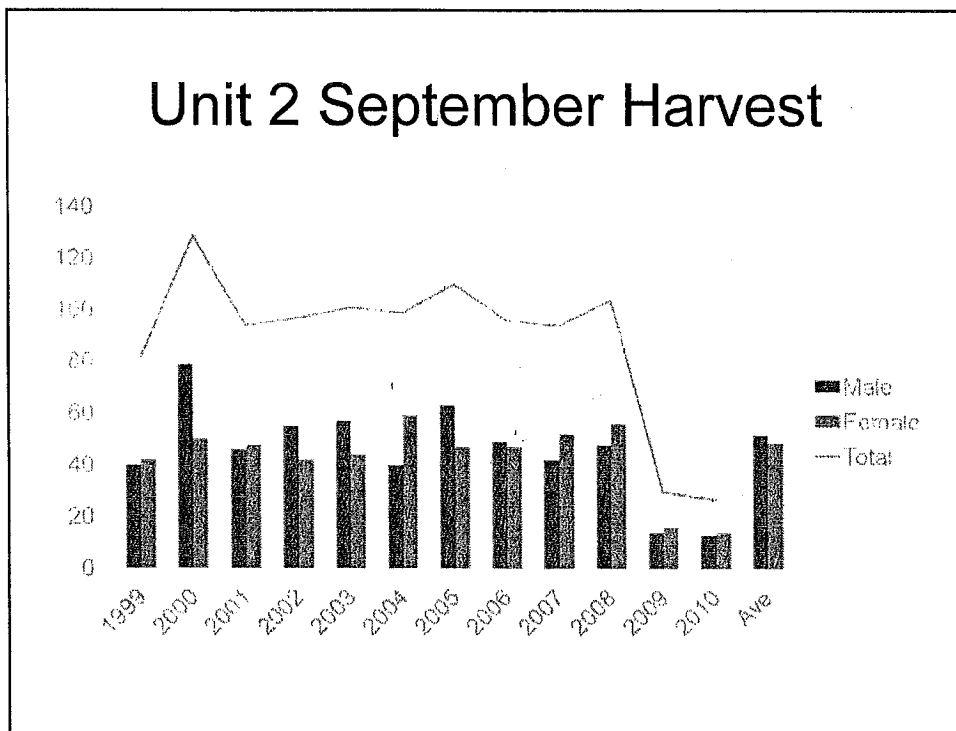
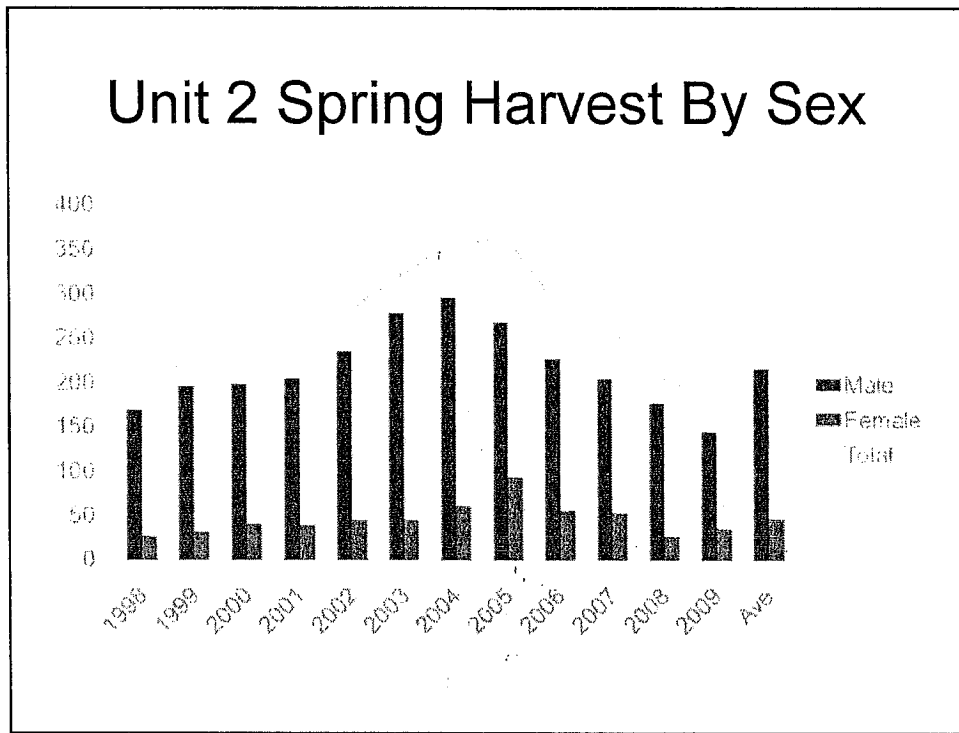
## Controlled Use Area Summary

- Average September Harvest 1999-2008
  - 101 Total, 52 Males, 49 Females
- 2009/2010 Average
  - 29 Total, 14 male, 15 female
  
- Average October Harvest 1999-2008
  - 12 Total, 6 male, 6 female
- 2009/2010 Average
  - 22 Total, 10 male, 12 female

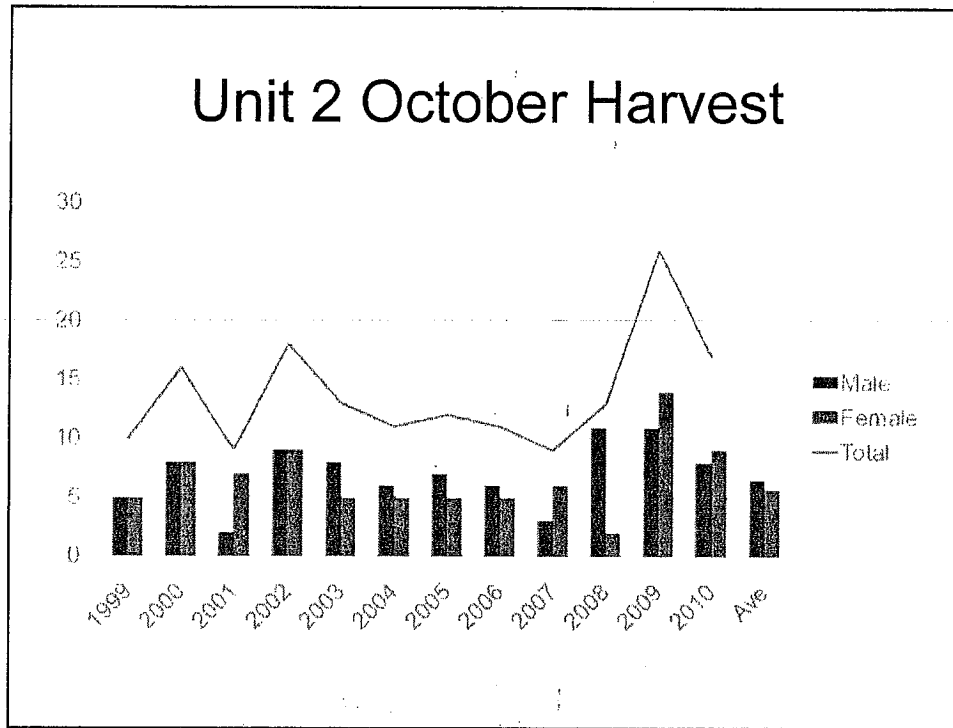
# Ketchikan Area Overview-Unit 2



## Ketchikan Area Overview-Unit 2



## Ketchikan Area Overview-Unit 2



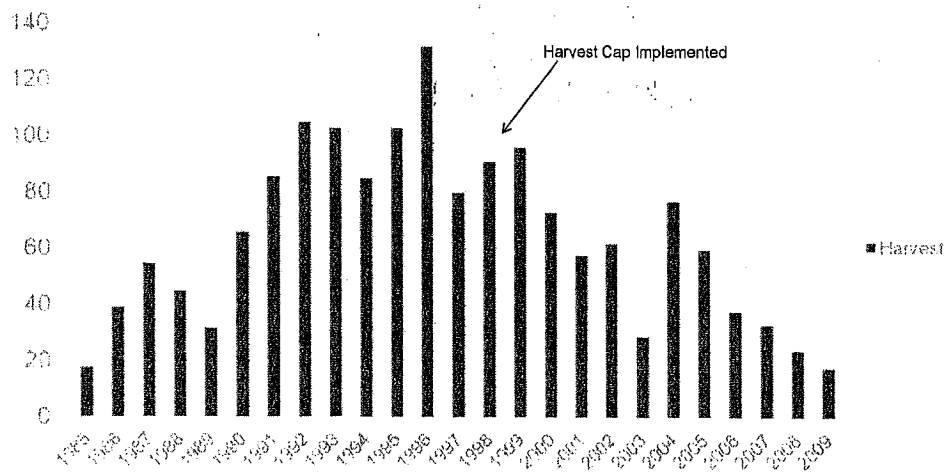
### Controlled Use Area Summary

- Average Harvest Fall 1999-2008
  - 118 Total, 62 Male, 56 Female
- 2009/2010 Average
  - 54 Total, 26 male, 28 female

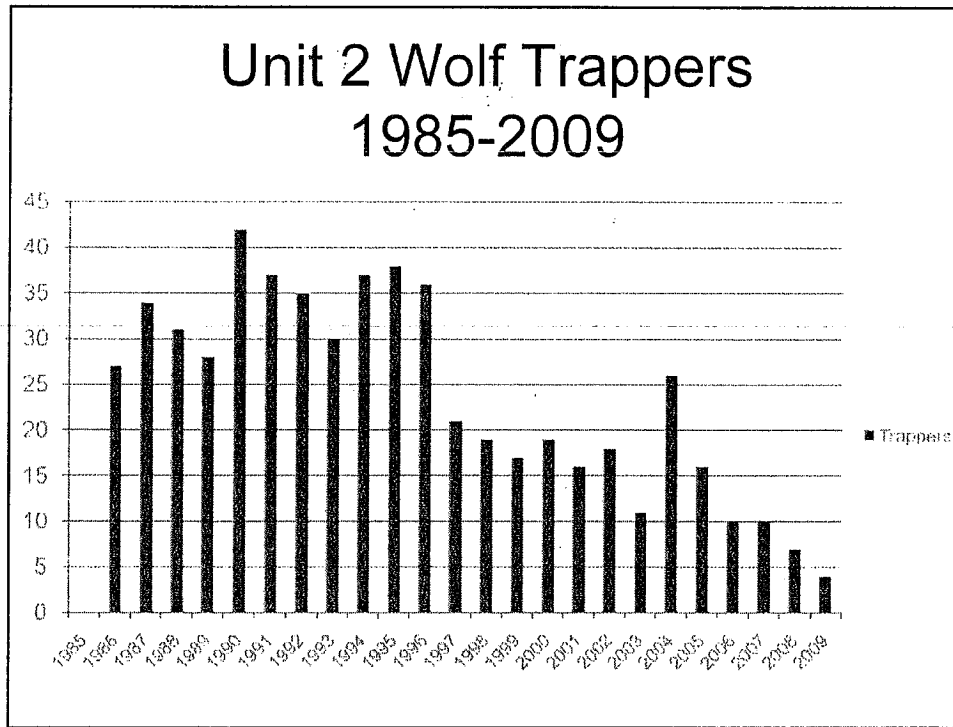
## Unit 2 Wolves

- Wolf Population Declining
- Fewer Trappers
- Harvest Cap 30% of Fall Population
- Closed By Emergency Order 1999
- Difficult To Track Population or Harvest
- Illegal Harvest
- Proposals 18 & 25

## Unit 2 Wolf Harvest (1985-2009)



## Ketchikan Area Overview-Unit 2



## Wolf Research

- **Objective:**
  - Develop methods to estimate population and monitor trends using DNA extracted from scats
- **Field work:**
  - Scat collection along roads and trail intersects assisted by trained dog began spring 2010
  - Establish 50-60 scent post stations
- **Results:**
  - Few scats due to low wolf activity
  - Eleven previously active den sites all unused

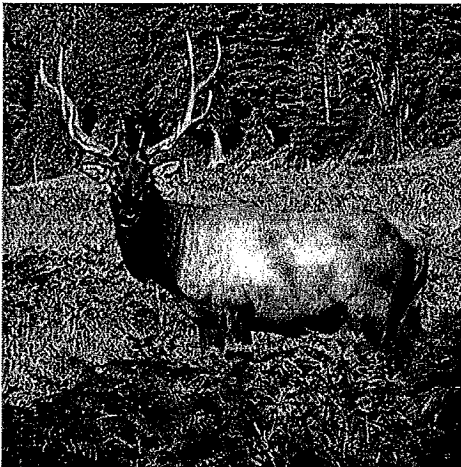
## Unit 2 Furbearers

- Marten average 796 (range 303-1226)
- River Otter average 235 (range 71-486)
- Beaver average 194 (range 53-310)
- Beaver & Marten Trappers Use Roads
  - 85% & 66%
- Otter Trappers Use Boats
  - 75%
- Proposals 29 & 31

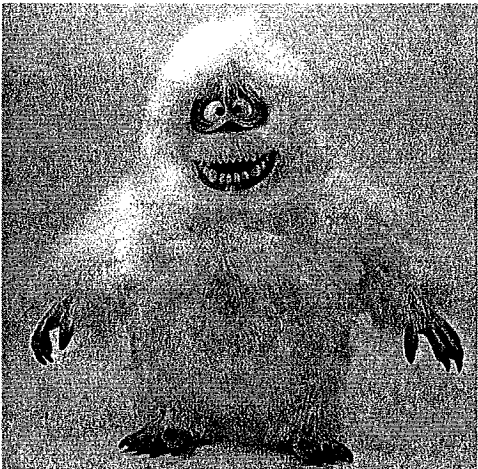
## Unit 2 Upland Birds



### Elk On Prince of Wales?



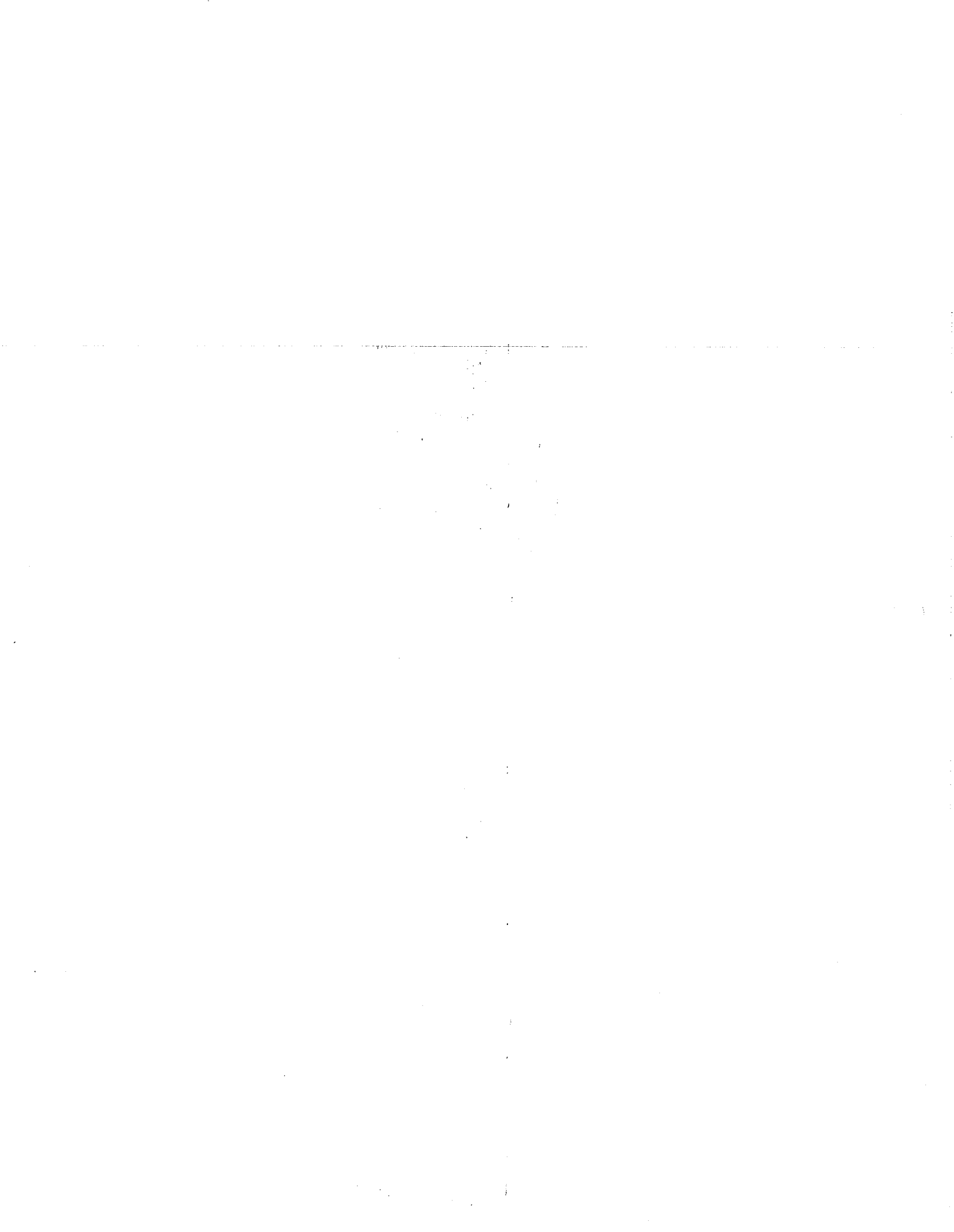
### Sasquatch





## The Truth Is Out There





## **Proposal 6**

**Shorten Unit 1A Bucks Only Season  
To End November 30**

### **Public Proposal**

**Department Recommendation:**

**Adopt**

Proposal 6

### **Existing State Subsistence Criteria**

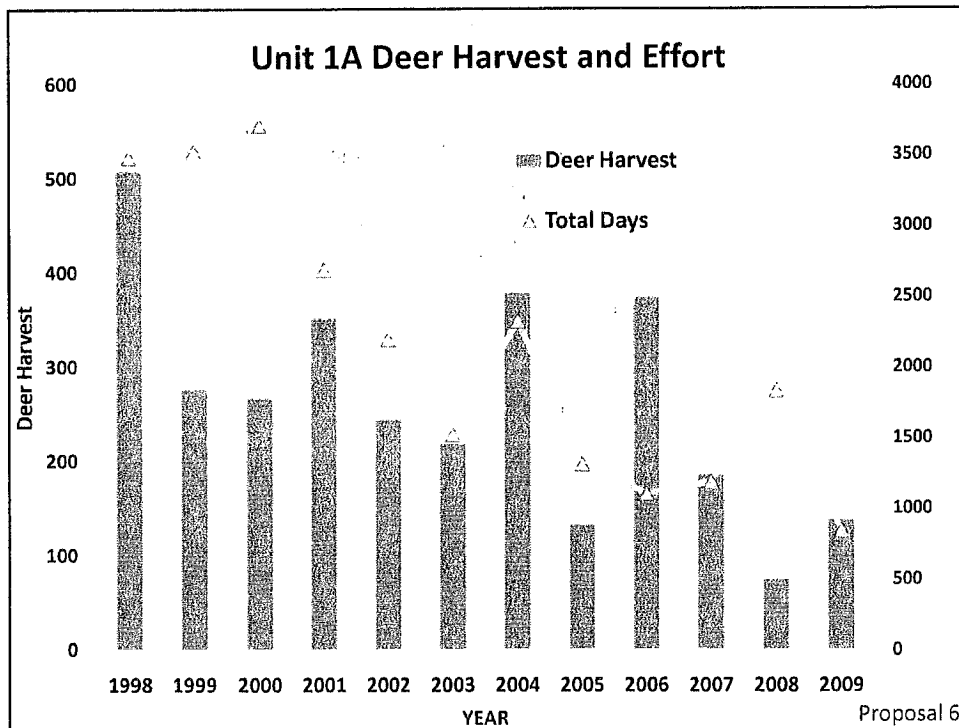
- Positive C&T for deer in Unit 1A
- ANS is 225-250 deer
- Portion of Unit 1A in non subsistence area

Proposal 6

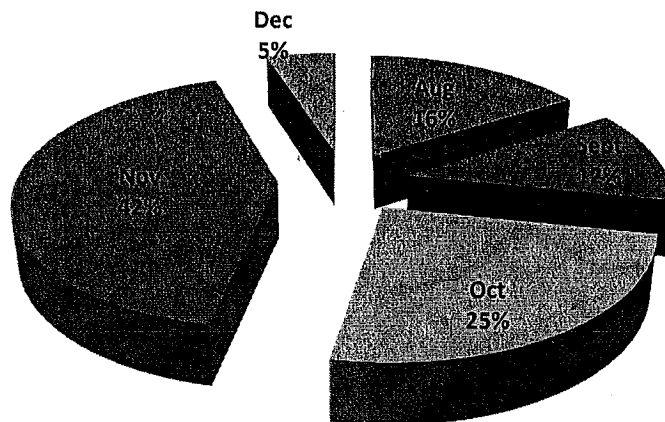
## Discussion

- Unit 1A Low deer numbers
- High wolf and bear density
- Moderate to poor deer winter habitat in most areas of Unit 1A
- Winter weather and predation drive deer numbers
- Consistent with areas with similar circumstances ie. Unit 3

Proposal 6

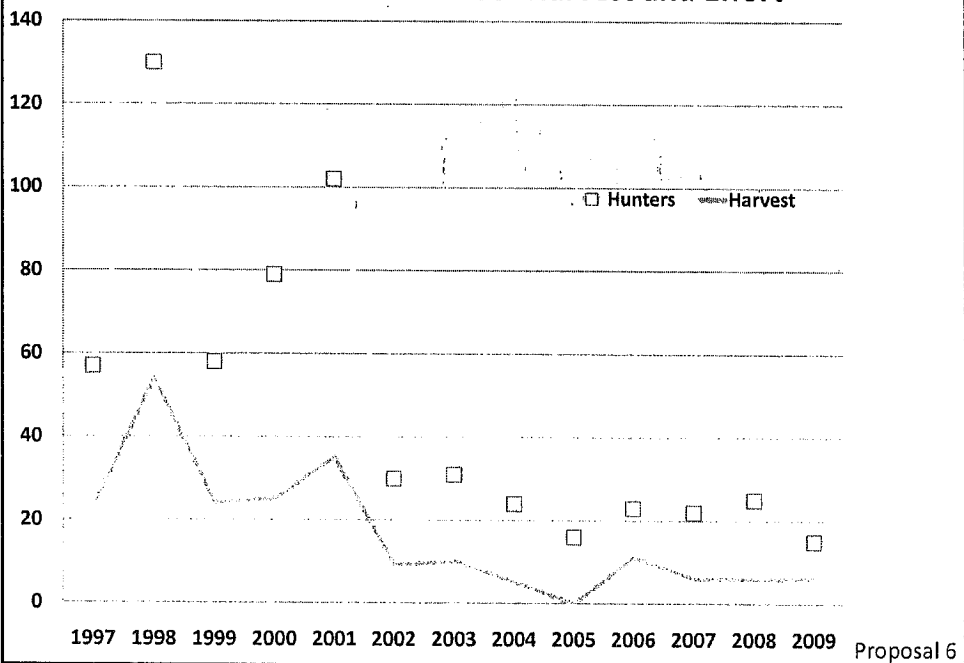


### Unit 1A Deer Harvest By Month (1999-2009)

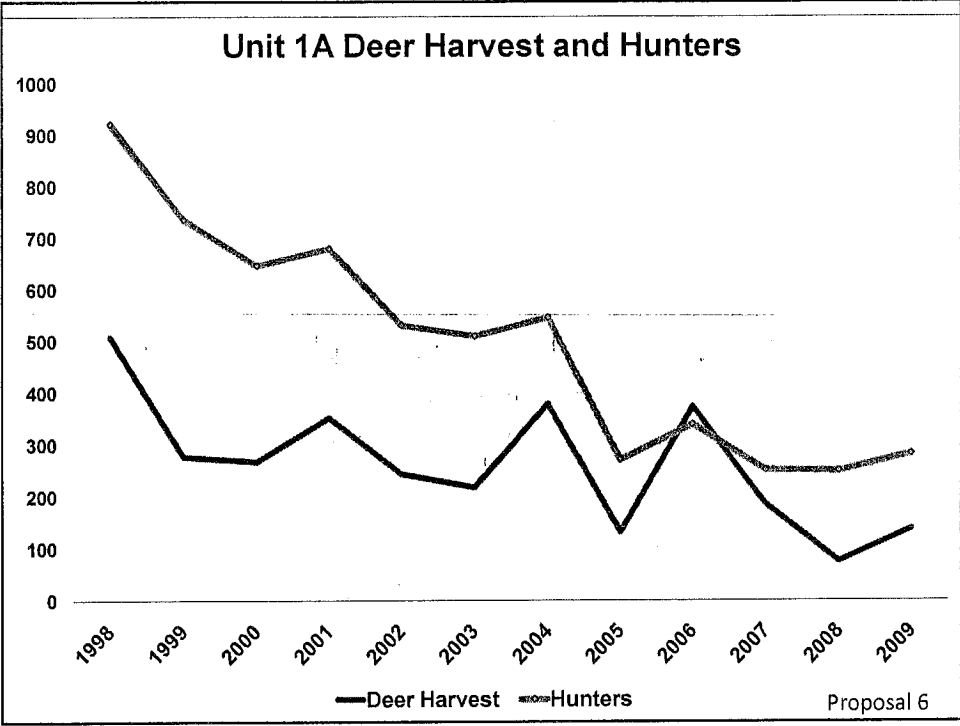


Proposal 6

### Unit 1A December Deer Harvest and Effort



Proposal 6



### Advisory Council Votes

- Ketchikan AC 4/5

Proposal 6

## **Proposal 24**

This proposal would reduce the non-resident bag limit in Unit 2 from 4 bucks to 2 antlered deer

### **Public Proposal**

Department Recommendation:  
**Do Not Adopt**

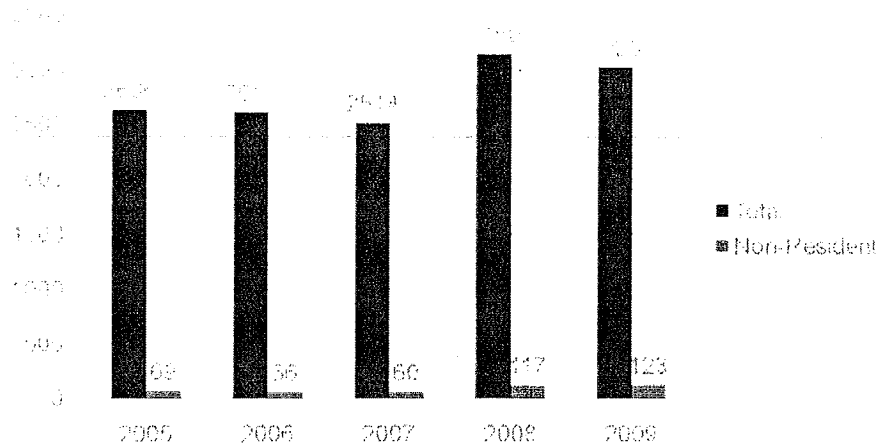
Proposal 24

## **Proposal 24**

- The author of this proposal is concerned about increases in NR hunting pressure on deer which could result in a conservation risk and potential reduced resident opportunity

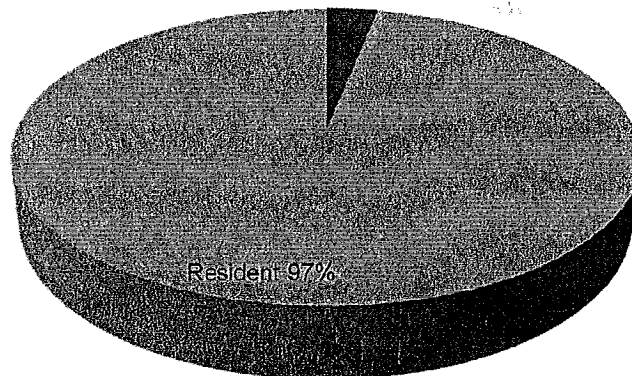
Proposal 24

## Unit 2 Deer Harvest



Proposal 24

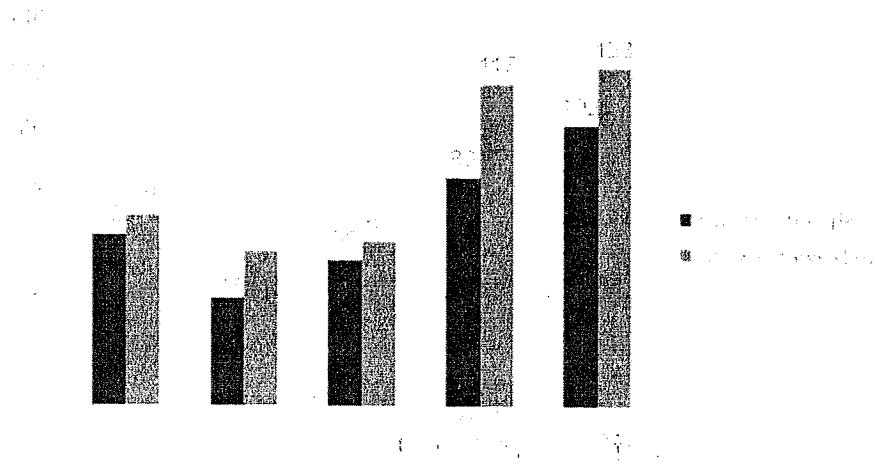
## Unit 2 Deer Harvest By Residency (2005-2009)



Proposal 24



## Bucks Per Successful NR Hunters (2005-2009)



Proposal 24

## Proposal 24

- Deer populations limited by weather, habitat and predation
- Unit 2 deer populations abundant
- Deer seldom targeted by nonresidents  
– NR typically purchase 2 deer tags
- No conservation concern

Proposal 24

ADF&G Advisory Committee Votes  
Proposal 24

- Craig AC- 7/1 Oppose

Department Recommendation:

Do Not Adopt

Proposal 24

**Proposal 7**  
**Goat Drawing Permit  
Allocation**

**Public Proposal**

Department Recommendation:  
**Take No Action**

Proposal 7

**Our Goat Management Approach**

- **Registration permits**
- **Hunter Comments**
- **Aerial Composition Surveys**
  - **Manage for 2-8 points/hundred goats surveyed**
  - **2 points if poor survey conditions, bad winter, high harvest, or other concerns**

Proposal 7

### DG 003 Drawing Permit Allocations

	Permits	Harvest		Total	Survey
		Male	Female	Points	
2006	12	4	2	8	109
2007	12	5	1	7	137
2008	20	3	1	5	88
2009	25	7	6	19	85
2010	4	1	2	5	132
Average	15	4	2	9	110

\* 5-8 points preferred for growing populations

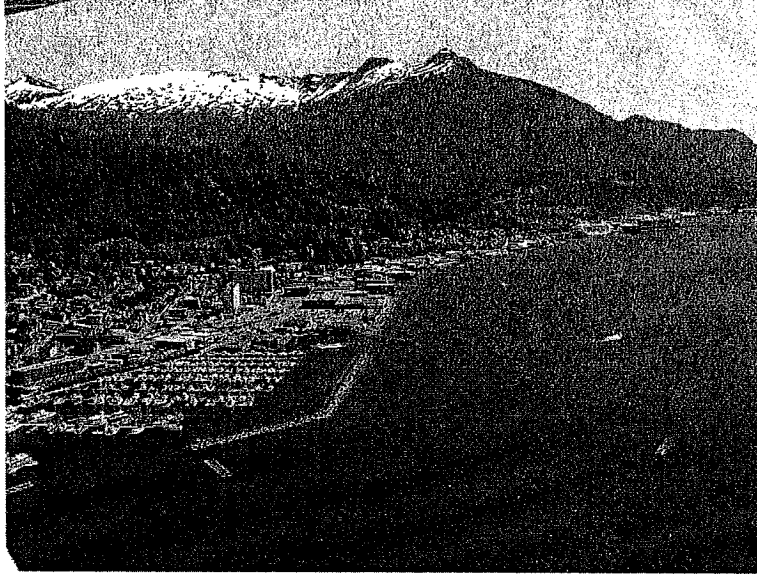
Proposal 7

## Discussion

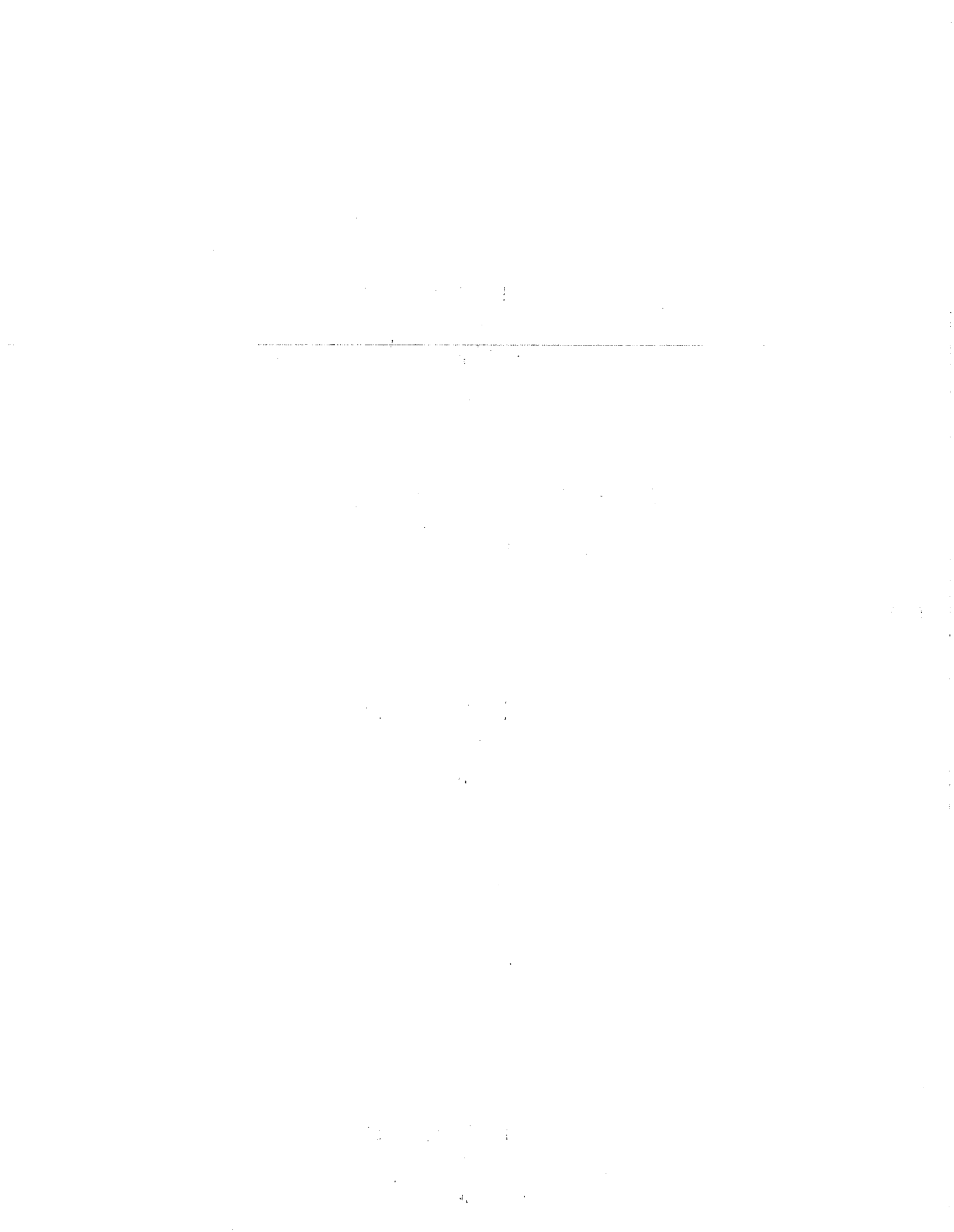
- Proponent Suggests The Area Biologist Does Not Use Standard Method For Adjusting Goat Permit Allocation
- Hunt Permit Allocation Arbitrarily Set
- Should Be "Better" Surveys Before Permit Numbers Are Set

Proposal 7

## Ketchikan and Deer Mountain



Proposal 7



## Proposal 23

This proposal would change the Unit 2 bear hunt to a registration hunt and shorten the season dates to Oct. 1- May 31

### Public Proposal

Department Recommendation:

**Take No Action**  
(See Proposal 36)

Proposal 23

## Proposal 23

- The author of this proposal is concerned with over harvest of the black bear population
- Department proposal #36 addresses black bear conservation

Proposal 23

### ADF&G Advisory Committee Votes

- Craig AC- 8/0 Oppose

Department Recommendation:

Take No Action  
(See Proposal 36)

Proposal 23





## **Proposal 21**

This proposal would shift the start of  
the black bear hunt in Unit 2 from  
Sept. 1 to Oct. 1

Public Proposal

Department Recommendation:

**Take No Action  
(See Proposal 36)**

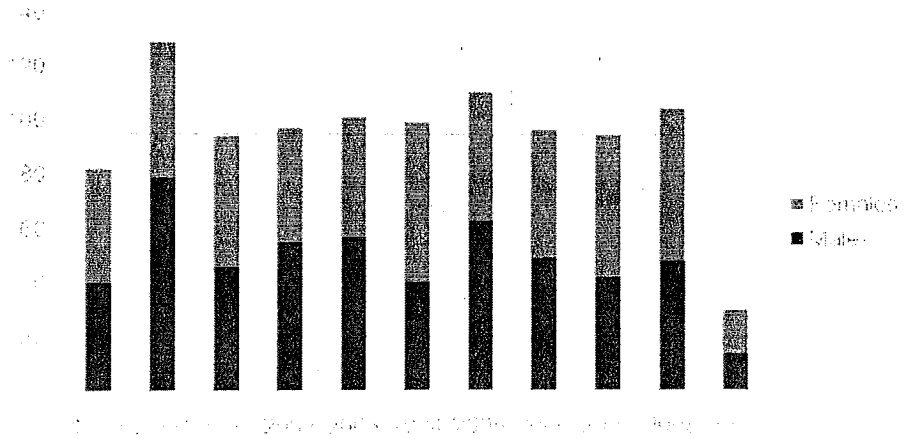
Proposal 21

## **Proposal 21**

- The author of this proposal is concerned with the harvest of females due to vulnerability along salmon streams
- Department proposal #36 addresses black bear conservation

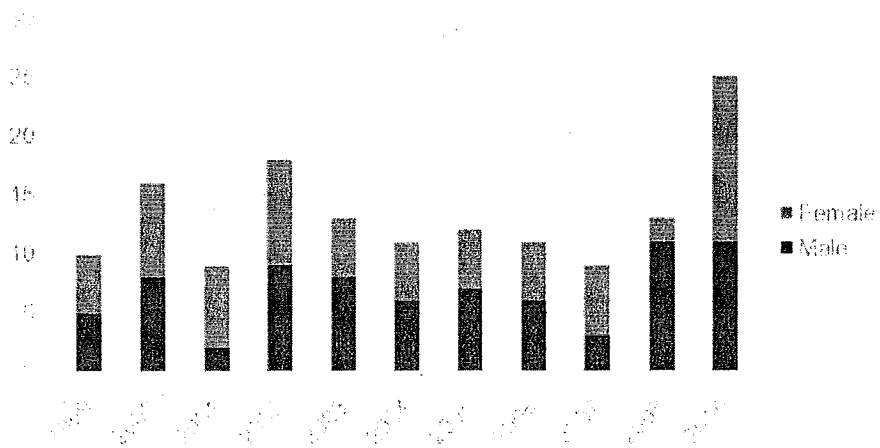
Proposal 21

## Unit 2 September Harvest



Proposal 21

## Unit 2 October Harvest



Proposal 21

## Proposal 21

- 2009 harvest suggests females still vulnerable in October
- Hunt start date change may result in shift of hunter effort to October as seen with CUA
- Other options outlined in Proposal 36 would bring harvest closer to sustainable levels

Proposal 21

## ADF&G Advisory Committee Votes

### Proposal 21

- Craig AC- 8/0 Oppose

Department Recommendation:  
Do Not Adopt  
(See Proposal 36)

Proposal 21



## Proposal 22

This proposal would eliminate the June portion of the black bear season in Unit 2

Public Proposal

Department Recommendation:

**Take No Action**  
(See Proposal 36)

Proposal 22

## Proposal 22

- The author of this proposal is concerned with harvest of females and poor hide quality in June
- Department proposal #36 addresses black bear conservation

Proposal 22

## ADF&G Advisory Committee Votes Proposal 22

- Craig AC- 8/0 Oppose

Department Recommendation:

Take No Action  
(See Proposal 36)

Proposal 22



## Proposal 20

This proposal would establish a draw  
Hunt for black bears in Unit 2

Public Proposal

Department Recommendation:

**Take No Action**  
(See Proposal 36)

Proposal 20

## Proposal 20

- The author of this proposal is concerned with harvest levels and sustainability of population
- The author prefers drawing hunt rather than controlled use area
- Department proposal #36 addresses black bear conservation

Proposal 20

## ADF&G Advisory Committee Votes

### Proposal 20

- Craig AC – 8/0 Oppose

Department Recommendation:

Take No Action  
(See Proposal 36)

Proposal 20





## Proposal 1

Change the Bear Baiting Season  
Dates in Unit 1A

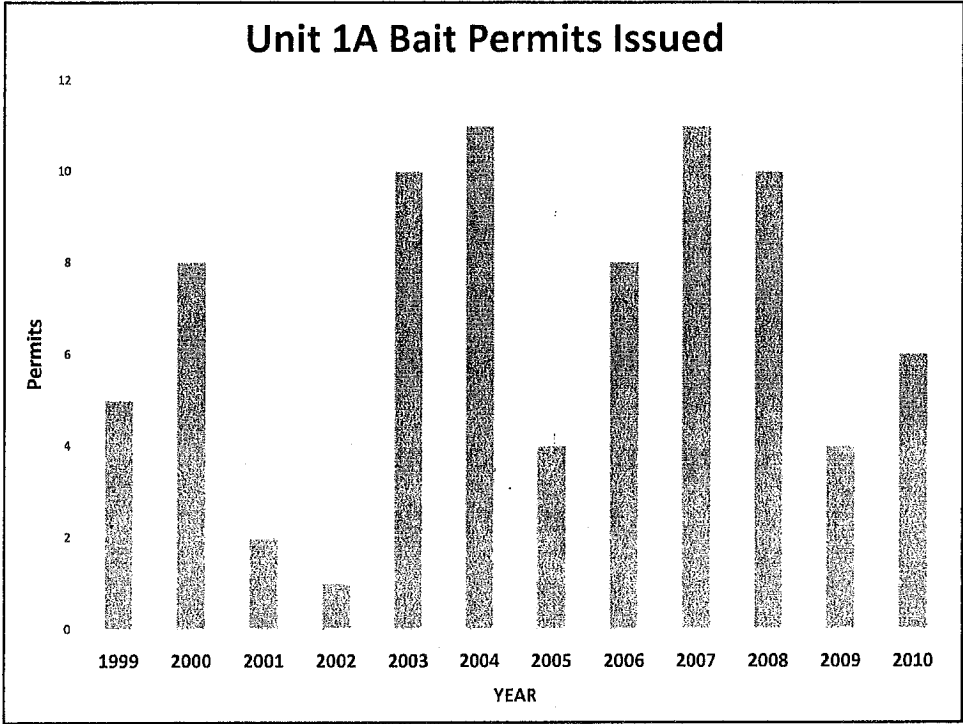
Public Proposal

**Department Recommendation:  
Take No Action**

## Proposal 1

Author Issue: Bear baiting Spring 2009  
interfered with wolf trapping

- Discussion:
- Trapping and baiting seasons overlap 2 weeks
- Start date for bear baiting April 15 across State
- In Unit 1A during April Average 5.1 (range 2-11) bear bait sites registered and 3.3 wolves harvested (range 0-9)



- ### Advisory Votes
- Ketchikan AC votes
  - Craig AC

## **Proposal 2**

### **Close Area in Unit 1A To Black Bear Hunting**

#### **Public Proposal**

**Department Recommendation:  
No Recommendation**







## Discussion

- No official bear viewing areas in these locations
- The area includes several bodies of protected coastal water on Revillagigedo Island near Ketchikan
- Popular bear hunting and recreation areas
- The Department considers this an allocation issue

## Advisory Votes

- Ketchikan 0/8 oppose
- Craig 0/9 oppose

# Ketchikan Area Bear Closure Proposals

Neets Bay

Margaret Creek View Area

Carroll Inlet

Ketchikan, AK

Annette Island

Pearse Island

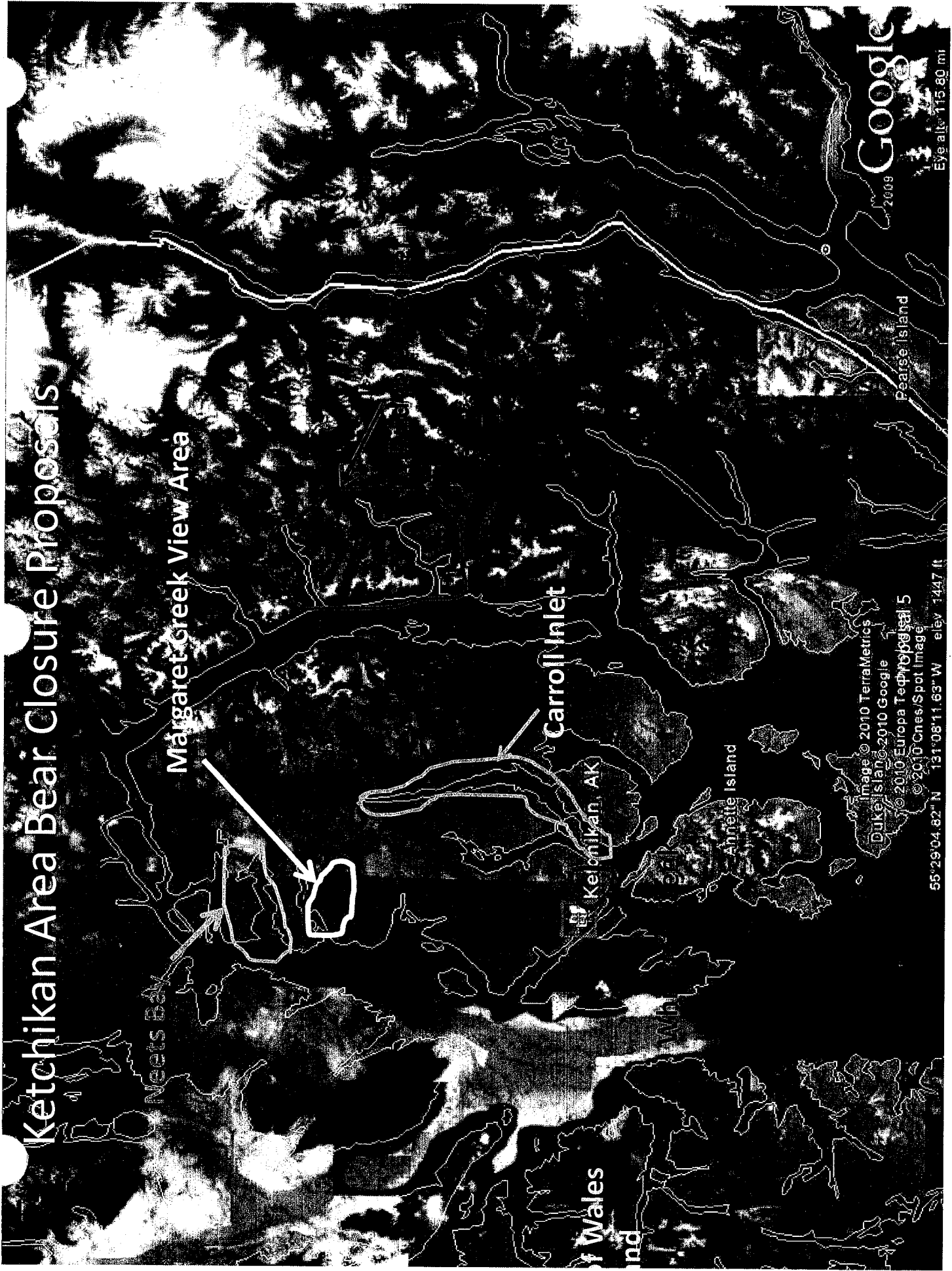
Image © 2010 TerraMetrics  
Duke Island © 2010 Google  
© 2010 Europa Technology Ltd  
© 2010 Cnes/Spot Image

55°29'04.82" N 131°08'11.63" W elev 1447 ft

Google

Eye alt 115.80 mi

of Wales  
and







**Proposal 3**

Close an Area Near Ketchikan to  
Bear Hunting

Public Proposal

Department Recommendation:  
No Recommendation



## Herring Cove Bear Closure

- Area already closed By State Regulation ¼ mile from road and structures
- No bears ever harvested within 5 miles of this area
- Proponent mistook past DLP bears as hunter bear kills

## Advisory Council Votes

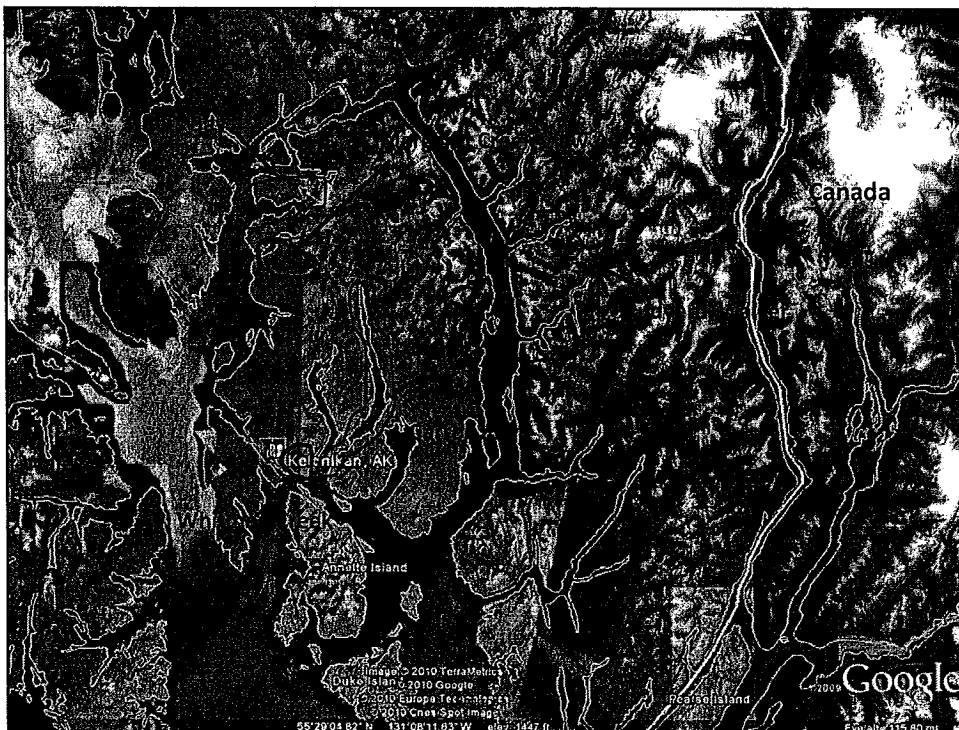
- Ketchikan AC 0/9 oppose
- Craig AC no vote

**Proposal 4**  
**Close an area near Ketchikan to**  
**bear hunting**

**Public Proposal**

**Department Recommendation:**  
**No Recommendation**

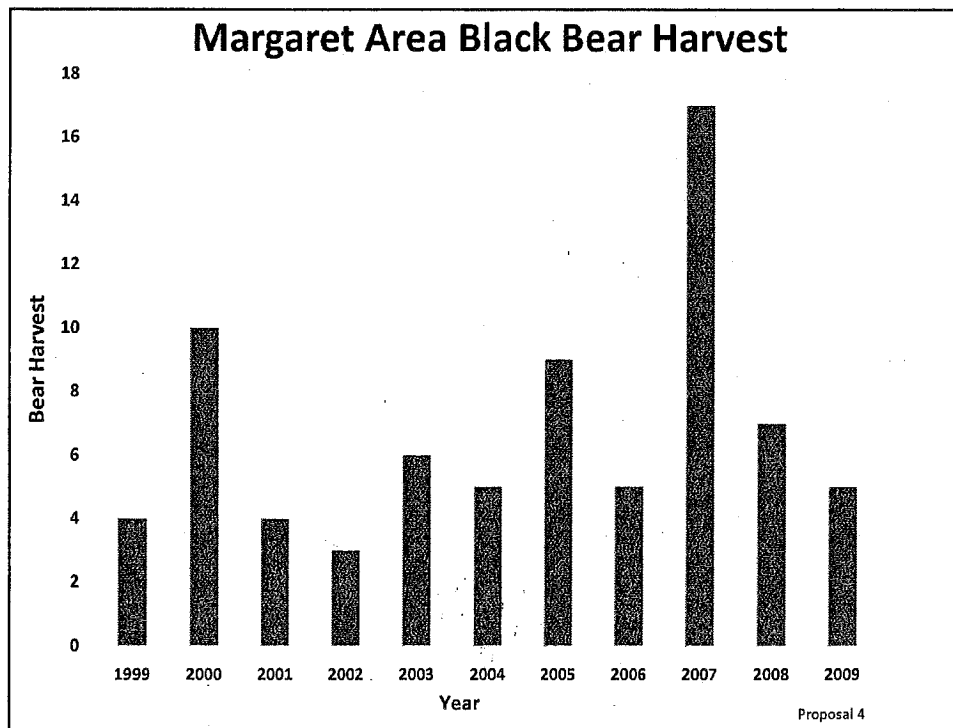
Proposal 4



## Discussion

- Proposal submitted to Board several times during last 10 years
- Dock at saltwater and access road connects to several hundred miles of logging roads
- Forest Service Staff monitor site during June July and August
- Department considers this an allocation issue

Proposal 4



# AC vote

Craig AC No Vote

Ketchikan AC 2/6

Proposal 4



**Proposal 5**  
**Close an Area Near Ketchikan to**  
**Bear Hunting**

**Public Proposal**  
**Department Recommendation:**  
**No Recommendation**

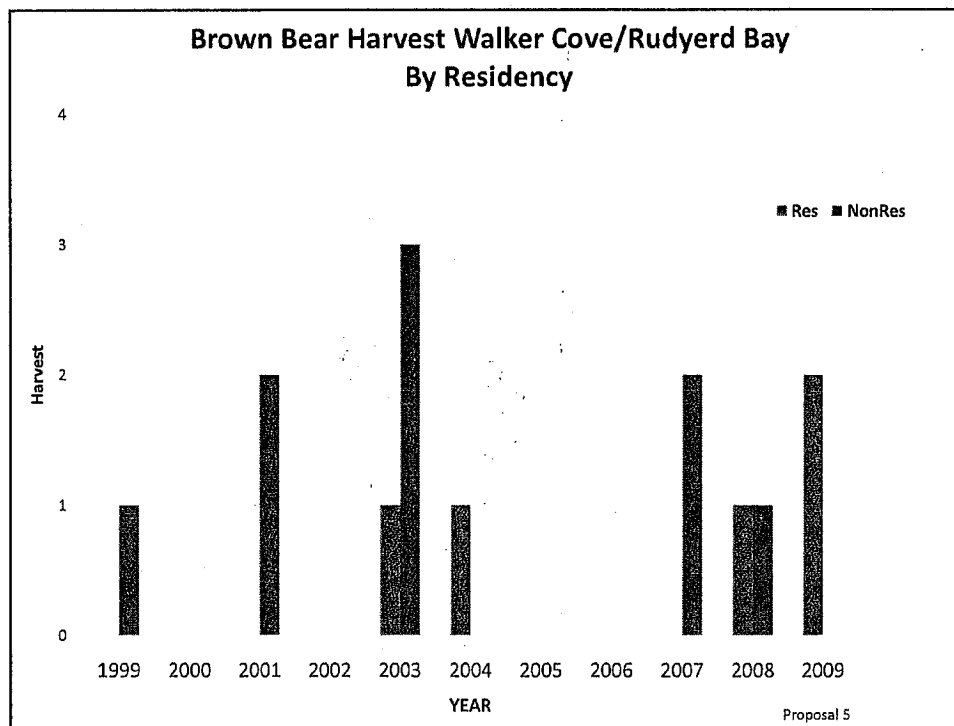
Proposal 5



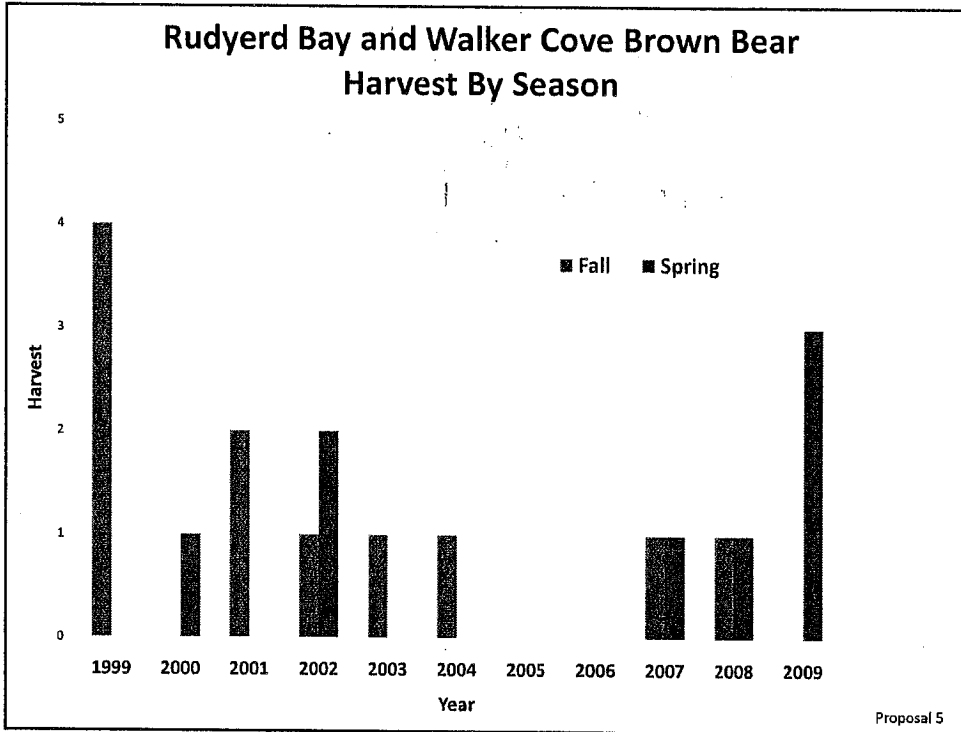
## Discussion

- Author would like to close an area in Misty Fiords to bear hunting to protect bears for viewing
- Department has no recommendation and sees this as an allocation issue

Proposal 5







### Advisory Council Votes

- Ketchikan AC Vote 0/9

Proposal 5



## **Proposal 19**

Close The Area Around Dog Salmon  
Creek on POW to Bear Hunting

Public Proposal

Department Recommendation:  
**No Recommendation**

Proposal 19

## **Dog Salmon Creek on Prince of Wales Island**



## Discussion

- Author wants to close an area on POW island to bear hunting for viewing
- “No shooting” signs posted by USFS at trailhead and road/stream crossing below site
- Area closed to discharge of firearms within 150 yards of trail and site by Forest Service Regulation

Proposal 19

## Advisory Council Votes

- Ketchikan AC No vote
- Craig AC 0/9 oppose

Proposal 19

Proposal 9

Increase the Wolf Harvest Objectives  
in Unit 1A

Public Proposal

**Department Recommendation:**  
**Take No Action**

Discussion

- Raise the management objectives for wolves in Unit 1A
- Met and discussed with proponent several times
- As periodic review of 1A wolf objectives we revised from 25 to 40

Advisory Council Votes

- Ketchikan AC 4/5 oppose
- Craig AC no vote



## **Proposal 18**

This proposal would reduce the Unit 2 wolf bag limit to 10/year and require sealing within 14 days

Department Proposal

Department Recommendation:

**Do Not Adopt**

Proposal 18

## **Proposal 18**

- The Department is concerned with long-term sustainability of Unit 2 wolf population, low populations could trigger listing
- Significant decline in harvest (131 to 18)
- Substantial reduction in wolf sign (scats, tracks, denning activity)
- Illegal snares found after season closed

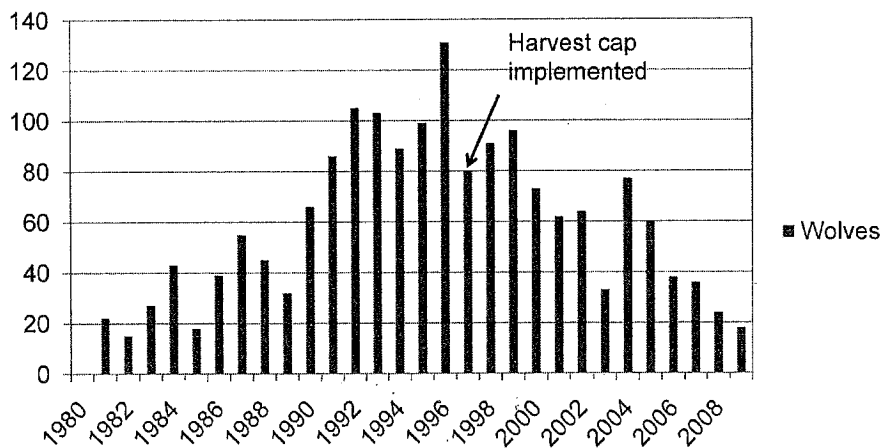
Proposal 18

## Proposal 18

- Unit 2 harvest cap has been 90
- Department considering lowering harvest cap to 60 wolves/year
- Encourage USFS to adopt similar regulations including marking traps/snares

Proposal 18

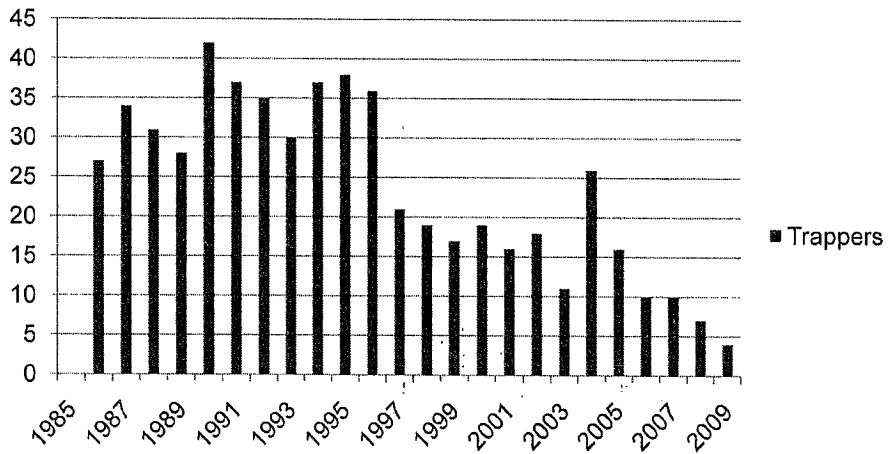
## Unit 2 Wolf Harvest (1980-2009)



Proposal 18

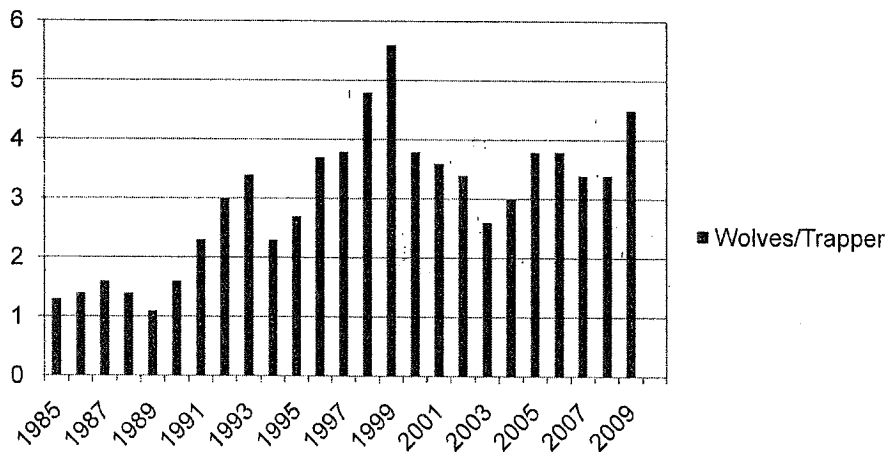


## Unit 2 Wolf Trappers 1985-2009



Proposal 18

## Unit 2 Wolves Per Trapper 1985-2009



Proposal 18

## ADF&G Advisory Committee Votes Proposal 18

- Juneau-Douglas AC- Support 6/5
- Craig AC- 8/0 Oppose
  - Agree wolf numbers down, but less trapping due to market prices
  - Too many loopholes in regulation
  - Wolf trapping is self-regulatory, population is cyclic
  - Wolves on adjacent islands at high levels
  - 14 day sealing requirement is unenforceable

Proposal 18

## Proposal 18

Department Recommendation:  
Do Not Adopt

Proposal 18

## Proposal 25

This proposal would modify the wolf trapping and hunting regulations in Unit 2

Public Proposal

Department Recommendation:

**Take No Action**  
(See Proposal 18)

Proposal 25

## Proposal 25

- The author of this proposal is concerned with illegal/unreported harvest of wolves in Unit 2
- The author is concerned with wolf over-harvest
- Department proposal #18 addresses wolf conservation

Proposal 25

## Proposal 25

Defenders of Wildlife Support:

- Require trap and snare marking
  - ADFG: Required under state regulations
- Reduce harvest cap
  - ADFG: Can be done w/o regulatory change
- Establish trap check times
  - ADFG: Considering with Federal Agencies
- Reduce time to report
  - ADFG: Proposal 18
- Introduce bag limits
  - ADFG: Proposal 18

Proposal 25

## ADF&G Advisory Committee Votes Proposal 25

- Craig AC- 8/0 Oppose
  - Agree wolf numbers down but less trapping due to market prices
  - Too many loopholes in regulation
  - Wolf trapping is self-regulatory, population is cyclic
  - Same species of wolves on adjacent islands at high levels
  - 14 day sealing requirement is unenforceable

Proposal 25

## Proposal 25

Department Recommendation:  
**Take No Action**  
(See Proposal 18)

Proposal 25



# **Unit 1A Wolverine**

## **PROPOSAL 8**

**Lengthen the trapping season for  
wolverine in Unit 1A**

**Nov 10 – April 30**

**Public Proposal**

**Department Recommendation**

**Do Not ADOPT**

## **REGION 1 WOLVERINE TRAPPING SEASONS**

- **Prior to 1985; wolverine trapping season ranged from**
  - Dec 1-Jan 31
  - Nov 10-Feb 15
- **From 1985 – 2008**
  - Nov 10 - April 30
- **Since 2009**
  - Nov 10 – Feb. 15

**Proposal 8**

## Regional Percent Females by Month

(1984 – 2007)

NOV	64%
DEC	35%
JAN	39%
FEB	39%
MAR	43%
APR	42%

Proposal 8

## Unit 1A Wolverine Harvest By Month

Year	December		January		February		March		April	
	Male	Female	Male	Female	Male	Female	Male	Female	Male	Female
1989	0	0	0	0	0	0	0	0	1	0
1990	1	0	3	2	0	0	1	0	0	0
1991	0	0	0	1	0	0	0	0	0	0
1992	0	0	0	1	0	0	0	0	0	1
1993	1	0	0	0	0	0	0	0	0	0
1994	0	0	0	0	2	0	1	0	2	0
1995	0	0	0	0	0	0	2	0	2	0
1996	0	0	0	0	0	0	2	0	1	0
1997	2	0	0	0	0	0	1	0	0	0
1998	0	0	0	0	0	0	0	0	0	0
1999	0	0	0	0	1	0	0	0	0	0
2000	0	0	1	0	2	0	0	0	0	0
2001	0	0	0	0	0	2	0	0	0	0
2002	0	0	2	0	1	1	0	0	0	2
2003	1	0	0	0	0	1	0	0	0	0
2004	0	1	0	0	0	0	0	0	0	0
2005	0	0	0	1	0	0	0	0	0	0
2006	0	0	5	0	1	0	0	0	0	0
2007	0	0	0	1	1	0	0	2	1	0
2008	1	1	0	1	0	0	0	0	0	0
2009	0	0	0	1	0	0	0	0	0	0
<b>Total</b>	<b>6</b>	<b>2</b>	<b>11</b>	<b>8</b>	<b>8</b>	<b>4</b>	<b>7</b>	<b>2</b>	<b>7</b>	<b>3</b>

## **DISCUSSION**

- **Wolverine kits born Feb-Mar**
- **Some adult females were taken in March and April when they still had dependant young in dens**
- **Loss of litter = reduced recruitment**
- **Fewer animals available for harvest**

Proposal 8

## **Summary**

- **Protecting denning females reduces opportunity for a few late-season trappers**
- **Incidental wolverine catch in wolf sets is believed to be relatively low**
- **Most wolf sets are pulled by April to avoid catching black bears**

### ***However, it...***

**Increases reproductive success**

- **Increases recruitment**
- **Increases trapper success**
- **Aligns wolverine end date with most furbearers**

Proposal 8

## Advisory Committee Votes

- Ketchikan AC 0/9 Support
- Craig AC no vote

### PROPOSAL 8

Department Recommendation

Do Not ADOPT